



- **Wood** is forever
- **BEKA** is for children





## **BEKA –**

### **a program of furniture for children**

For our children is a day in the crib or kindergarten an intense experience. For the educators that means a new challenge every day. Our job is to make life easier for children and teachers. To find smart solutions with a strong educational and social value is always our goal. So we have in the many years that we manufacture children's furniture develop many new products in collaboration with our customers.

We would like to thank our customers. There are a lot of new interesting things to discover.

With sensitivity and manual skill which needs to be translated into reality.

Latest technology helps us from a crude piece of wood or a rough plywood manufacture the popular children's furniture from the Ore Mountains.

## **Curious?**

Then live with us a piece of kindergarten everyday in our new catalogue.







**Shelf combinations 2 – 9**

**Group room cupboards 10 – 27**

**Chairs & Tables 28 – 33**

**Cloakrooms 34 – 41**

**Room partitions 42 – 47**

**Playhouses 48 – 53**

**Children's furniture 54 – 59**

**Children's kitchen 60 – 65**

**Hobby & Sport 66 – 77**

**Rest room & Comfy corner 78 – 81**

**Toddler 82 – 85**

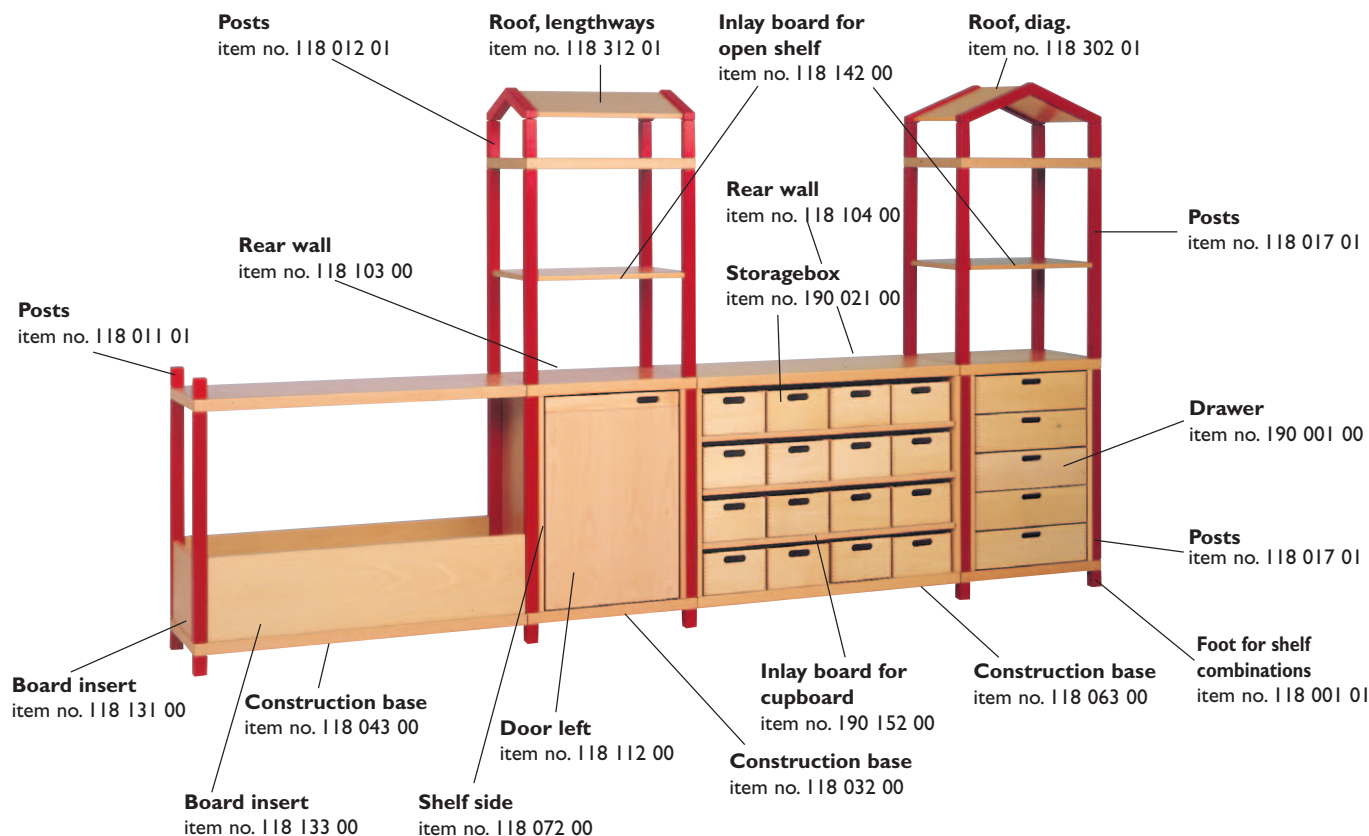
**Learning aids & Toys 86 – 91**

**Staff room 92 – 98**

**Accessories & Materials 99 – 103**

**Index 105**





## Our service for you!

We plan your shelf combination according to your wishes.

Our shelves are also available with coloured posts, hand grips and boxes. Please choose the color from our palette on page 103 and give the corresponding colour number on your order.

Extra charge for coloured stained parts 10%.



### Shelf combinations „Brussels“

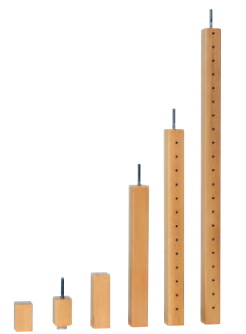
W 328 H 187 D 40

118 505..

playing height 84 cm

In next to no time, with literally a flick of the wrist, an extremely stable, useful and elegant comes about through the screws and threads in the posts.

For these shelf combination you need 41 pieces.





# Shelf combinations by BEKA – stable solutions for every area

Our complete palette of colours you can find on page 103 or visit our website.



Shelf combination „Prague“  
W 252/364 H 172 D 40  
118 523 ..  
playing height 84 cm



## Design your own individual group room

From the 100 odd „from bottom to top“ individual components there are innumerable shelf combinations which can be adapted to the individual room. The following combinations represent only a small part of the full combination range. Our furniture experts will gladly help in planning your interior design.

The prices and colours of the ready-made combinations are according to the pictures (colour stain posts, hand grips, drawers and storage boxes in natural beech).





**Shelf combination „Athens“**  
W 202/308 H 198 D 40  
118 510 ..  
playing height 84 cm

**Shelf combination „Leipzig“**  
W 272 H 188 D 40  
118 542 ..  
playing height 84 cm



**Shelf combination „Halle“**  
W 202 H 91 D 40  
118 541 ..  
playing height 84 cm



**Shelf combination „Berlin“**  
W 202/308 H 172 D 40  
118 511 ..  
playing height 84 cm





**Shelf combination „Vienna“**  
W 222 H 198 D 40  
118 503 ..  
playing height 84 cm



**Shelf combination „Venice“**  
(please choose the fabric)  
W 222 H 188 D 40  
118 543 ..  
playing height 47/70 cm



**Shelf combination „Weimar“**  
W 110 H 91 D 40  
118 544 ..

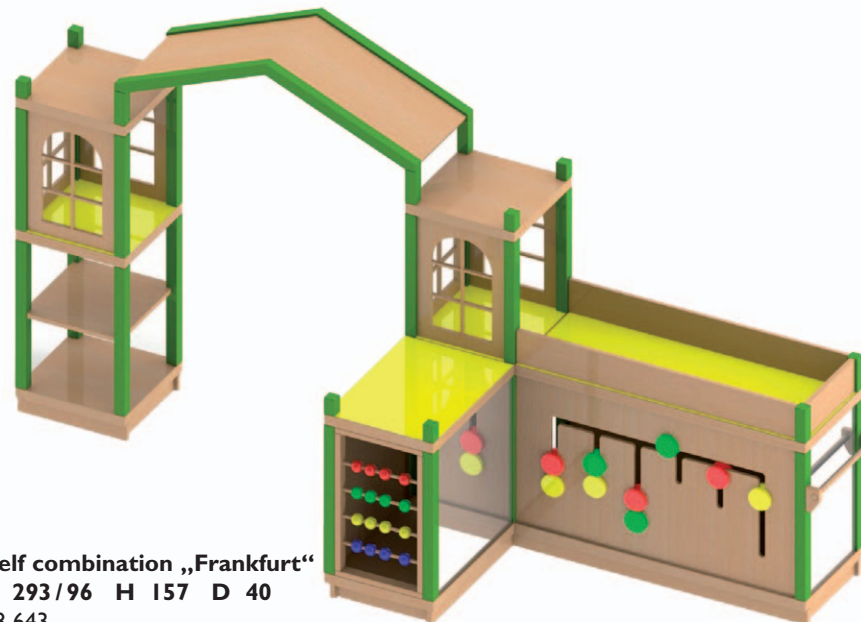
**Shelf combination „Tokyo“**  
W 202/96 H 121 D 40  
118 545 ..  
playing height 47/84 cm







**Shelf combination „London“**  
**W 322 H 176 D 40**  
 I 18 504 ..  
 playing height 84 cm



**Shelf combination „Frankfurt“**  
**W 293/96 H 157 D 40**  
 I 18 643 ..  
 playing height 70 cm



**Shelf combination „Bagdad“**  
**W 146 H 178 D 40**  
 I 18 537 ..  
 playing height 84 cm



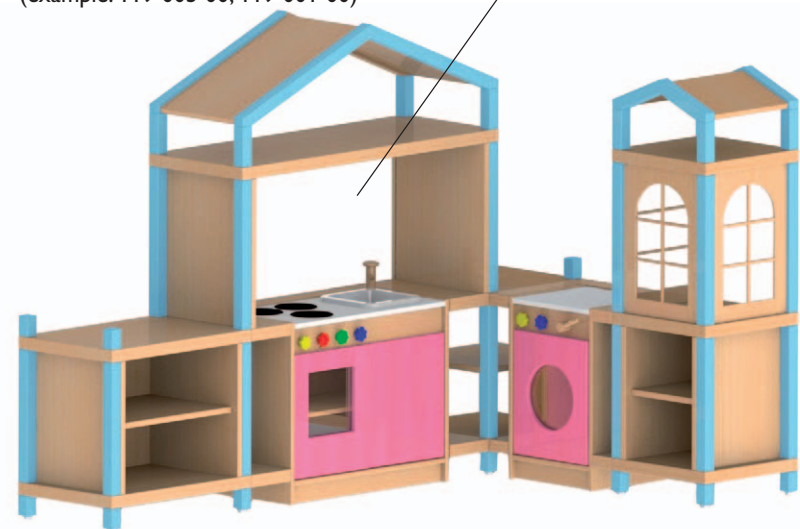
**Shelf combination „Hamburg“**  
**W 151/96 H 143 D 40**  
 I 18 545 ..  
 playing height 70 cm



**Shelf combination „Nice“**  
**W 146 H 129 D 40**  
 I 18 546 ..  
 playing height 56 cm



**Shelf combination „Sonneberg“**  
**W 202/132 H 157 D 40**  
 I 18 547 ..  
 playing height 56 cm  
**please add the children's furniture**  
 (example: I 19 005 00, I 19 001 00)



**Shelf combination „Copenhagen“**  
**W 272 H 164 D 40**  
 I 18 507 ..  
 playing height 84 cm



**Shelf combination „Lisbon“**  
**W 166 H 164 D 40**  
 I 18 509 ..  
 playing height 84 cm



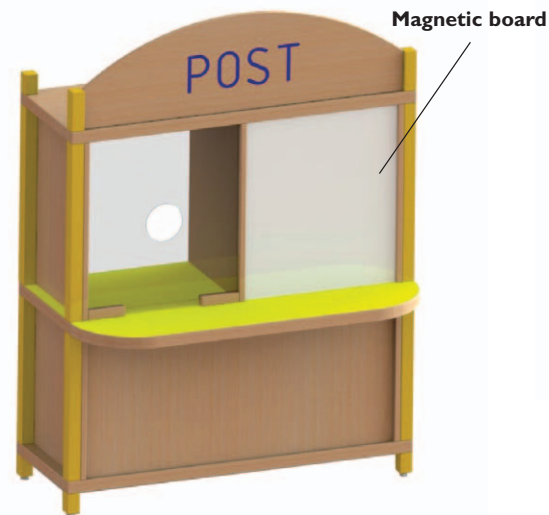




Chalk board



**Shelf combination „Bank“**  
W 110 H 150 D 40  
118 806 ..  
playing height 60 cm  
Work disk laminate coated



Magnetic board



**Shelf combination „Post“**  
W 110 H 150 D 40  
118 804 ..  
playing height 60 cm  
Work disk laminate coated

**Shelf combination „Bremen“**  
W 190 H 127 D 40  
118 548 ..  
playing height 70 cm



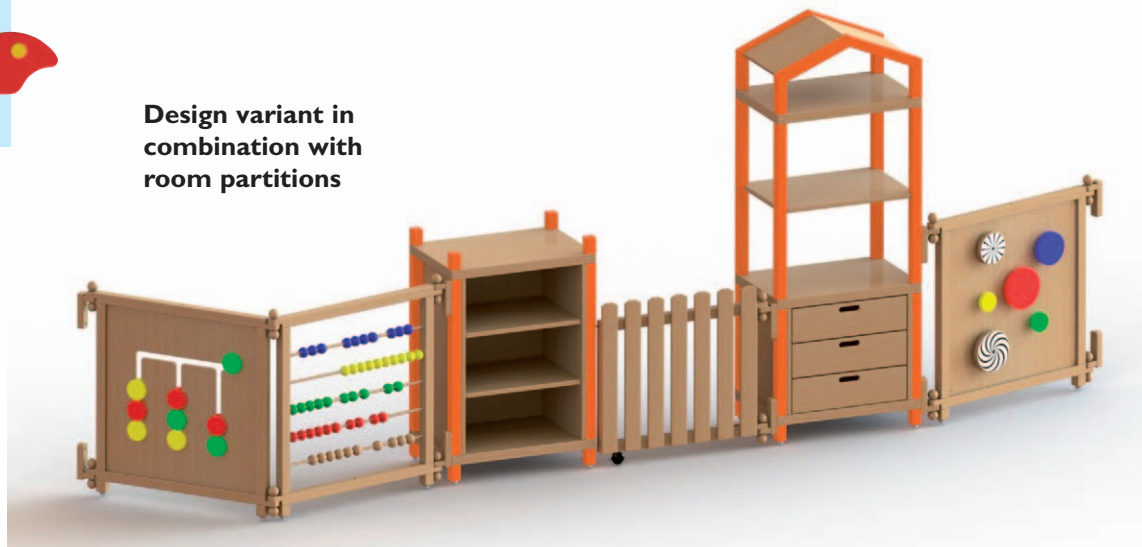
**Shelf combination „Minishop“**  
W 110 H 150 D 40  
118 807 ..  
playing height 60 cm



**Please contact  
us, we plan  
your own shelf  
combination!**



**Design variant in  
combination with  
room partitions**



**Shelf combination „Zurich“ open**  
**W 60 H 187 D 40**  
118 513 ..  
playing height 84 cm



**Shelf combination „Zurich“  
with door left**  
**W 60 H 187 D 40**  
118 514 ..  
playing height 84 cm



**Shelf combination „Zurich“  
with door right**  
**W 60 H 187 D 40**  
118 516 ..  
playing height 84 cm



**Shelf combination „Zurich“  
with 5 drawers**  
**W 60 H 187 D 40**  
118 515 ..  
playing height 84 cm

**Shelf combination „Amsterdam“**  
**W 216 H 196 D 40**  
118 512 ..  
playing height 84 cm





Our cupboards and drawers can be combined in various ways, a lot of storage space, an attractive exterior from all sides (a visible rear) as well as a colourful creation through stained hand grips, drawers and storage boxes.

We are able to offer you the cupboards in veneered beech or laminated beech.

**Veneered beech :**

The rear, the sides, the doors and all boards real wood EI boards and sealed with two layers of formaldehyde-free DD-varnish.

**Laminated beech :**

The rear, the sides and boards are laminated material.

The shelves and drawers are secured against unintentional withdrawal and can be ordered individually.

**Shelves for cupboard (incl. shelf base)**

190 151 00 W 48 D 35

190 152 00 W 48 D 35

Would you like a door with HEWI-handle please replace the first digit of item number through 4 (example 113 001 00 – 413 001 00).

**Cylinder lock available on request :**

190 081 99 for the left door

190 082 99 for the right door



**Colour stained hand grip**  
extra charge



**Colour stained draws**  
10% extra charge



**There is an aesthetic back to all cupboards**



**Standard**  
**Hand grip with hand-hole**



**item no. 4... ..**  
**HEWI-grip**



This is our economyplace hinge.



**Door furred beech**



**Door with acrylic glass**



# Cupboards by BEKA – flexibly combined

Our complete palette of colours you can find on page 103 or visit our website.



## Our cupboards – many space for games

The upper cupboards, which are available in three different breadths and can be placed on cupboards with an open or closed base, can attain a height of 1.26 m / 1.40 m / 1.66 m / 1.80 m / 2.00 m or even 2.40 m.

At the base of the upper cupboards there are spacer bars to prevent them sliding sideways. For a further preventive measure double-sided sticking tape is sufficient.





## Upper cupboard for small cupboards, width 52 cm, height 60 cm or 100



door,  
1 adjustable shelf  
**W 52 H 60 D 40**  
113 101 00 door left  
113 101 00 m door left  
113 102 00 door right  
113 102 00 m door right

door,  
2 adjustable shelves  
(not illustrated)  
**W 52 H 100 D 40**  
113 401 00 door left  
113 401 00 m door left  
113 402 00 door right  
113 402 00 m door right



acrylic glass door,  
1 adjustable shelf  
**W 52 H 60 D 40**  
113 105 00 door left  
113 105 00 m door left  
113 106 00 door right  
113 106 00 m door right

acrylic glass door,  
2 adjustable shelves  
(not illustrated)  
**W 52 H 100 D 40**  
113 405 00 door left  
113 405 00 m door left  
113 406 00 door right  
113 406 00 m door right



open, 1 adjustable shelf  
**W 52 H 60 D 40**  
113 104 00  
113 104 00 m  
open,  
2 adjustable shelves  
(not illustrated)  
**W 52 H 100 D 40**  
113 404 00  
113 404 00 m



open, 2 adjustable shelves  
**W 52 H 80 D 40**  
113 004 00  
113 004 00 m  
open, 1 adjustable shelf  
(not illustrated)  
**W 52 H 66 D 40**  
113 504 00  
113 504 00 m



beech veneered – item no. green

beech laminated – item no. brown

## Small cupboards with base, width 52 cm, height 80 cm or 66 cm



door, 2 adjustable shelves  
**W 52 H 80 D 40**  
113 001 00 door left  
113 001 00 m door left  
113 002 00 door right  
113 002 00 m door right

door, 1 adjustable shelf  
(not illustrated)  
**W 52 H 66 D 40**  
113 501 00 door left  
113 501 00 m door left  
113 502 00 door right  
113 502 00 m door right



5 drawers  
**W 52 H 80 D 40**  
113 003 00  
113 003 00 m  
4 drawers  
(not illustrated)  
**W 52 H 66 D 40**  
113 503 00  
113 503 00 m



5 drawers with acrylic glass  
**W 52 H 80 D 40**  
113 005 00  
113 005 00 m  
4 drawers with acrylic glass  
(not illustrated)  
**W 52 H 66 D 40**  
113 505 00  
113 505 00 m



## Corner shelves with base, height 140 cm, 80 cm or 66 cm



open, 4 non-adjustable shelves  
W 40 H 140 D 40  
113 008 00  
113 008 00 m



open, 2 non-adjustable shelves  
W 40 H 80 D 40  
113 009 00  
113 009 00 m  
open, 1 non-adjustable shelf (not illustrated)  
W 40 H 66 D 40  
113 509 00  
113 509 00 m

## Books good kept and presented



Cupboard with base  
2 non-adjustable lectern shelves  
W 102 H 80 D 40  
113 010 00  
113 010 00 m



Booking trolley with 4 casters, 2 can be fixed, front storage for books  
Rear open with 4 non-adjustable shelves  
W 102 H 86 D 40  
113 011 00  
113 011 00 m



Booking box with casters,  
3 compartments  
W 60 H 48 D 40  
113 014 00  
113 014 00 m

## Group room cupboards



## Cupboards with base and partitions, width 102 cm, height 80 cm or 66 cm



left 5 drawers,  
right open, 2 adjustable shelves  
**W 102 H 80 D 40**

113 029 00  
113 029 00 m

left 4 drawers, (not illustrated)  
right open, 1 adjustable shelf  
**W 102 H 66 D 40**

113 529 00  
113 529 00 m

right 5 drawers, (not illustrated)  
left open, 2 adjustable shelves  
**W 102 H 80 D 40**

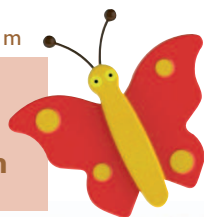
113 028 00  
113 028 00 m

right 4 drawers, (not illustrated)  
left open, 1 adjustable shelf  
**W 102 H 66 D 40**

113 528 00  
113 528 00 m

beech veneered – item no. **green**

beech laminated – item no. **brown**



Design variant



left door, right open, each section  
with 2 adjustable shelves

**W 102 H 80 D 40**

113 022 00  
113 022 00 m

left door, right open, each section  
with 1 adjustable shelf (not illust.)  
**W 102 H 66 D 40**

113 522 00  
113 522 00 m

left open, right door, each section  
with 2 adjustable shelves (not illust.)  
**W 102 H 80 D 40**

113 023 00  
113 023 00 m

left open, right door, each section  
with 1 adjustable shelf (not illust.)  
**W 102 H 66 D 40**

113 523 00  
113 523 00 m



5 drawers on left and right  
**W 102 H 80 D 40**

113 024 00  
113 024 00 m

4 drawers on left and right  
(not illustrated)

**W 102 H 66 D 40**

113 524 00  
113 524 00 m



2 doors, each section with  
2 adjustable shelves

**W 102 H 80 D 40**

113 021 00  
113 021 00 m

2 doors, each section with  
1 adjustable shelf (not illustrated)

**W 102 H 66 D 40**

113 521 00  
113 521 00 m



open,  
1 adjustable shelf  
**W 102 H 60 D 40**  
113 107 00  
113 107 00 m  
2 adjustable shelves  
(not illustrated)  
**W 102 H 100 D 40**  
113 407 00  
113 407 00 m



partition, 2 doors, each section  
with 1 adjustable shelf  
**W 102 H 60 D 40**  
113 121 00  
113 121 00 m  
each section with 2 adjustable  
shelves (not illustrated)  
**W 102 H 100 D 40**  
113 421 00  
113 421 00 m



partition, 2 acrylic glass doors,  
each section with 1 adjustable shelf  
**W 102 H 60 D 40**  
113 122 00  
113 122 00 m  
each section with 2 adjustable shelves  
(not illustrated)  
**W 102 H 100 D 40**  
113 422 00  
113 422 00 m

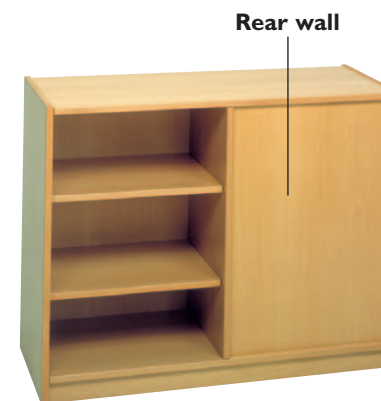


Cupboards with base and partition, width 102 cm, height 80 cm or 66 cm

Cupboards with base are also  
available on request with casters.



left door, 2 adjustable shelves,  
right 5 drawers  
**W 102 H 80 D 40**  
113 025 00  
113 025 00 m  
left door, 1 adjustable shelf,  
right 4 drawers (not illustrated)  
**W 102 H 66 D 40**  
113 525 00  
113 525 00 m  
left 5 drawers, (not illustrated)  
right door, 2 adjustable shelves  
**W 102 H 80 D 40**  
113 026 00  
113 026 00 m  
left 4 drawers, (not illustrated)  
right door, 1 adjustable shelf  
**W 102 H 66 D 40**  
113 526 00  
113 526 00 m



rear on left or right,  
each section with  
2 adjustable shelves  
**W 102 H 80 D 40**  
113 030 00  
113 030 00 m  
rear on left or right,  
each section with  
1 adjustable shelf  
(not illustrated)  
**W 102 H 66 D 40**  
113 530 00  
113 530 00 m



## Cupboards with base, width 102 cm, height 80 or 66 cm



open, 2 adjustable shelves

W 102 H 80 D 40

I 13 027 00

I 13 027 00 m

open, 1 adjustable shelf

W 102 H 66 D 40 (not illustrated)

I 13 527 00

I 13 527 00 m



open, 3 adjustable shelves

W 102 H 80 D 40

I 13 037 00

I 13 037 00 m

open, 2 adjustable shelves

W 102 H 66 D 40 (not illustrated)

I 13 537 00

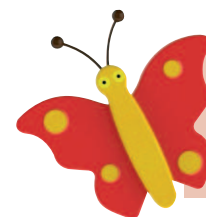
I 13 537 00 m



These illustrations show a small selection of design alternatives with boxes from pages 24 and 25.



Cupboards with base are also available on request with casters.



beech veneered – item no. green

beech laminated – item no. brown

## Cupboards with base, width 78 or 52 cm, height 120 cm



open, 2 shelves

W 78 H 120 D 40

I 13 727 00

I 13 727 00 m



open, 2 shelves

W 52 H 120 D 40

I 13 704 00

I 13 704 00 m

Design variant  
open cupboards for games,  
boxes and portfolios





2 partitions, 15 small drawers with acrylic glass front  
W 102 H 80 D 40

I 13 062 00  
I 13 062 00 m

2 partitions, 12 small drawers with acrylic glass front (not illustrated)  
W 102 H 66 D 40

I 13 562 00  
I 13 562 00 m



2 partitions, 15 small drawers  
W 102 H 80 D 40

I 13 052 00  
I 13 052 00 m

2 partitions, 12 small drawers  
W 102 H 66 D 40 (not illust.)

I 13 552 00  
I 13 552 00 m



1 partition, 10 small drawers with acrylic glass front  
W 69 H 80 D 40

I 13 063 00  
I 13 063 00 m

1 partition, 8 small drawers with acrylic glass front (not illustrated)  
W 69 H 66 D 40

I 13 563 00  
I 13 563 00 m



1 partition, 10 small drawers  
W 69 H 80 D 40

I 13 053 00  
I 13 053 00 m

1 partition, 8 small drawers (not illustrated)  
W 69 H 66 D 40

I 13 553 00  
I 13 553 00 m



Paper cupboard with base, 7 large drawers  
W 102 H 80 D 60

I 13 054 00  
I 13 054 00 m



Variably-sized for paper  
I 90 042 00



3 large drawers, top open without rear,  
1 adjustable shelf  
W 102 H 80 D 40

I 13 055 00  
I 13 055 00 m



All boxes with drawer stop!



**Property cupboard with base, width 78 cm or 102 cm, height 80 cm or 66 cm**



6 non-adjustable shelves,  
28 small property boxes  
W 102 H 80 D 40

I 13 042 00  
I 13 042 00 m

4 adjustable shelves,  
20 small property boxes (not illustrated)  
W 102 H 66 D 40

I 13 542 00  
I 13 542 00 m



6 non-adjustable shelves,  
21 small property boxes  
W 78 H 80 D 40

I 13 043 00  
I 13 043 00 m



6 non-adjustable shelves,  
21 small property boxes  
W 102 H 80 D 40

I 13 044 00  
I 13 044 00 m



beech veneered – item no. green

beech laminated – item no. brown

**Cupboards with base as room partition, 2 partitions, width 152 cm, height 80 cm**



open, each section with 2 adjustable shelves  
W 152 H 80 D 40

I 13 304 00  
I 13 304 00 m



door on left and right, middle open,  
each section with 2 adjustable shelves  
W 152 H 80 D 40

I 13 301 00  
I 13 301 00 m



left 5 drawers,  
right door, 2 adjustable shelves,  
middle open, 1 adjustable shelf  
W 152 H 80 D 40

I 13 302 00  
I 13 302 00 m



open, each section 1 adjustable shelf

W 152 H 60 D 40

113 134 00

113 134 00 m

open, each section 2 adjustable shelves  
(not illustrated)

W 152 H 100 D 40

113 434 00

113 434 00 m



door on left and right, middle open,

each section with 1 adjustable shelf

W 152 H 60 D 40

113 132 00

113 132 00 m

door on left and right, middle open,  
each section with 2 adjustable shelves (not illust.)

W 152 H 100 D 40

113 432 00

113 432 00 m



3 doors, each section with 1 adjustable shelf

W 152 H 60 D 40

113 131 00

113 131 00 m

3 doors, each section with 2 adjustable shelves  
(not illustrated)

W 152 H 100 D 40

113 431 00

113 431 00 m



Please contact  
us, we help you  
to plan your  
concept!



2 doors with acrylic glass, middle open,  
each section with 1 adjustable shelf

W 152 H 60 D 40

113 135 00

113 135 00 m

2 doors with acrylic glass, middle open,  
each section with 2 adjustable shelves  
(not illustrated)

W 152 H 100 D 40

113 435 00

113 435 00 m





## Cupboards with base as room partition, 2 partitions, width 152 cm, height 80 cm

5 drawers on left and right, middle open,  
2 adjustable shelves

W 152 H 80 D 40

I13 303 00

I13 303 00 m



left and right open, each section with  
3 adjustable shelves, middle 2 small  
doors, 2 adjustable shelves

W 152 H 80 D 40

I13 305 00

I13 305 00 m



beech veneered – item no. green

beech laminated – item no. brown

Cupboard as room partition  
with rear wall in centre



Usable from both sides!

Front :

left and right open, each section with  
2 adjustable shelves  
middle 2 small doors, 2 adjustable shelves,  
a non-adjustable shelf under door,  
6 small storage boxes

Rear :

3 open areas with 2 adjustable shelves  
in each section, the storage boxes can  
be taken out on either side

W 152 H 80 D 40

I13 306 00

I13 306 00 m



rear left and right in the back,  
rear in the middle in front,  
each section 2 shelves

W 152 H 80 D 40

I13 330 00

I13 330 00 m





## Small cupboards with an open base, width 52 cm, height 80 cm



open,  
1 adjustable shelf  
**W 52 H 80 D 40**  
113 204 00  
113 204 00 m



4 drawers  
**W 52 H 80 D 40**  
113 203 00  
113 203 00 m



door, 1 adjustable shelf  
**W 52 H 80 D 40**  
113 201 00 door left  
113 201 00 m door left  
113 202 00 door right  
113 202 00 m door right

## Cupboards with an open base and partition, width 102 cm, height 80 cm



left door, right open,  
each section with 1 adjustable shelf  
**W 102 H 80 D 40**  
113 222 00  
113 222 00 m

left open, right door,  
each section with 1 adjustable shelf  
(not illustrated)  
113 223 00  
113 223 00 m



left 4 drawers, right open,  
1 adjustable shelf  
**W 102 H 80 D 40**  
113 229 00  
113 229 00 m  
links open, 1 adjustable shelf  
right 4 drawers (not illustrated)  
113 228 00  
113 228 00 m



2 doors, each section with 1 adjustable shelf  
**W 102 H 80 D 40**  
113 221 00  
113 221 00 m



## Cupboard with an open base and partition, width 102 cm, height 80 cm



left door, 1 adjustable shelf,

right 4 drawers

W 102 H 80 D 40

I 13 225 00

I 13 225 00 m

left 4 drawers, right door

1 adjustable shelf (not illustrated)

I 13 226 00

I 13 226 00 m

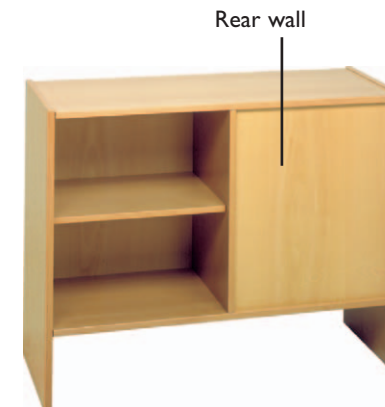


4 drawers on left and right

W 102 H 80 D 40

I 13 224 00

I 13 224 00 m



Rear wall

rear on left or right

each section with 1 adjustable shelf

W 102 H 80 D 40

I 13 230 00

I 13 230 00 m



beech veneered – item no. green

beech laminated – item no. brown

## Cupboards for day nursery kids, width 102 cm, height 45 cm



open (without box on rollers)

W 102 H 45 D 40

I 13 637 00

I 13 637 00 m

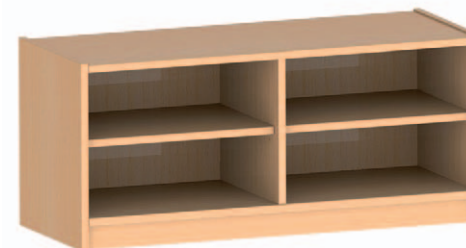


open, 1 shelf

W 102 H 45 D 40

I 13 627 00

I 13 627 00 m



1 middle side, each section 1 shelf

W 102 H 45 D 40

I 13 622 00

I 13 622 00 m



open, 1 shelf

W 40 H 45 D 40

I 13 609 00

I 13 609 00 m



open, 1 adjustable shelf  
W 102 H 80 D 40  
I 13 227 00  
I 13 227 00 m



open, 2 adjustable shelves  
W 102 H 80 D 40  
I 13 237 00  
I 13 237 00 m



open, 1 shelf  
W 102 H 80 D 40  
I 13 287 00  
I 13 287 00 m



These pictures show you  
a small selection of variants  
with material boxes.





## Shoulder bag cupboards with base, compartment size width 31.5 cm, height 42 cm



divided into 9 compartments

W 102 H 140 D 40

I 13 096 00

I 13 096 00 m



divided into 6 compartments

W 69 H 140 D 40

I 13 098 00

I 13 098 00 m



divided into 6 compartments

W 102 H 100 D 40

I 13 097 00

I 13 097 00 m

## Boxes at wooden beech with 2 grooves



property box small

W 23.5 H 7.7 D 36

I 90 031 ..



property box big

W 31.6 H 7.7 D 36

I 90 032 ..



storage box small

W 23.5 H 14 D 36

I 90 021 ..



storage box middle

W 31.6 H 14 D 36

I 90 025 ..



storage box big

W 31.6 H 19 D 36

I 90 023..



storage box small  
with acrylic glass fronts  
**W 23.5 H 14 D 36**  
190 022 ..



storage box middle  
with acrylic glass fronts  
**W 31.6 H 14 D 36**  
190 026 ..



storage box big  
with acrylic glass fronts  
**W 31.6 H 19 D 36**  
190 024 ..

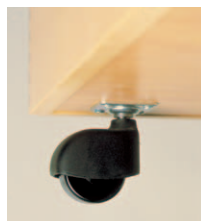


**Felt protective strip  
for storage boxes**  
190 061 99  
**for property boxes**  
190 062 99

(These are recommended to avoid  
premature wear of shelves.)



**Box on rollers for open base**  
**W 46 H 19.5 D 38**  
190 011 ..



**Box on rollers for cupboards with  
high open base**  
**W 46 H 36 D 38**  
190 013 00  
190 013 00 m



Storage and property boxes are available in different stains.  
Please add the two nos. according to the colour to the item no.



## Cupboards with base, material beech laminated



with 24 pairs of rails  
W 104 H 80 D 46  
113 072 00 m



with 32 pairs of rails  
W 138 H 80 D 46  
113 073 00 m



with 16 pairs of rails  
W 70 H 80 D 46  
113 071 00 m



with 8 pairs of rails  
W 36 H 80 D 46  
113 070 00 m

## Plastic drawers in 3 large and 4 colours



plastic drawer small  
W 31.2 H 7.5 D 42.7  
190 311 ..



plastic drawer middle  
W 31.2 H 15 D 42.7  
190 312 ..



The drawers can be delivered in following colours. Write down the correctly number please.

red box	... .. 01
blue box	... .. 02
green box	... .. 04
yellow box	... .. 05





plastic drawer big  
W 31.2 H 30 D 42.7  
190 313 ..



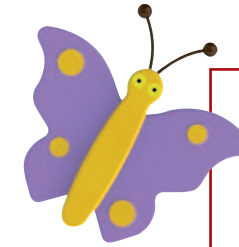
Cover for storage box  
transparent  
190 314 00



with 8 pairs of rails  
W 36 H 80 D 46  
113 074 00 m



with 16 pairs of rails  
W 70 H 80 D 46  
113 075 00 m



### TIP:

Stick identity  
pictures  
onto the plastic  
drawers.  
Looking it on  
page 34.



with 8 pairs of rails  
W 104 H 80 D 46  
113 076 00 m



with 32 pairs of rails  
W 138 H 80 D 46  
113 077 00 m

These pictures show you the new cupboards with different selections of the plastic drawers. You are able to combine the cupboards with boxes of different colours and larges. Paper, books, toys a.s.o. can be storage clearly and handy.



# Chairs by BEKA – seats for all ages



Stacking chair „Tobi“  
item no. height (cm)

111 206 ..	21
111 200 ..	26
111 201 ..	31
111 202 ..	35
111 203 ..	38
111 204 ..	43
111 205 ..	46



Armchair „Tobi“  
item no. height (cm)

111 306 ..	21
111 300 ..	26
111 301 ..	31
111 302 ..	35



Stacking chair „Tim“  
item no. height (cm)

111 406 ..	21
111 400 ..	26
111 401 ..	31
111 402 ..	34
111 403 ..	35
111 404 ..	43
111 405 ..	46



Armchair „Tim“  
item no. height (cm)

111 506 ..	21
111 500 ..	26
111 501 ..	31
111 502 ..	35



Stacking chair „André“, natural  
item no. height (cm)

111 706 00	21
111 700 00	26
111 701 00	31
111 702 00	35
111 703 00	38



Armchair „André“  
item no. height (cm)

111 716 00	21
111 710 00	26
111 711 00	31
111 712 00	35

There are three different types of stacking chairs on offer. How do they differ?

„Tobi“

Individually-shaped seat area glued on. Front edge of seat rounded-off at 40 mm, front and side croze covered.

„Tim“

Individually-shaped seat lies between side crozes and is glued screwed to frame, connection between side croze and front leg is with tenon joints.

„André“

Individually-shaped seat slotted in sideways. Rear part of frame juts out 10 mm, finger joint connection between the side frames and the front leg.

The frames of our chairs, which are designed to suit the body, are made of solid beech, the seat area and back rest are finished with laered wood.

The edges are plugged doweled and the complete chair is sealed with two layers of formaldehydefree DD-varnish.

All chairs are available in natural, chair „Tobi“ and „Tim“ also in colour stained.

## Seat help for the youngest children



extra charge for seat help  
111 911 00



Chair pedestal  
with seat height 34 cm  
111 901 00



stackable chairs



## Tables – Chairs – Body height

This three-way association is a harmonious relationship if one pays special attention to the correct height.

Our height table should help in this respect, in preventing damage to children's posture and so enabling playing and doing handicrafts to be pleasurable.

Table height	Chair height	Body height
40	21	80 – 90
46	26	93 – 116
53	31	108 – 121
59	35	119 – 142
64	38	133 – 159
71	43	146 – 176.5
76	46	a grown up





# Tables by BEKA – the right solution for every area



**Rectangular 80 x 60 cm**

item no.	height
112 206 ..	40
112 200 ..	46
112 201 ..	53
112 202 ..	59
112 203 ..	64
112 204 ..	71
112 205 ..	76

**Rectangular 120 x 60 cm**

item no.	height
112 216 ..	40
112 210 ..	46
112 211 ..	53
112 212 ..	59
112 213 ..	64
112 214 ..	71
112 215 ..	76

**Rectangular 120 x 80 cm**

item no.	height
112 226 ..	40
112 220 ..	46
112 221 ..	53
112 222 ..	59
112 223 ..	64
112 224 ..	71
112 225 ..	76

All table frames are made from solid beech wood and sealed with a double layer of formaldehyde-free DD-varnish.

The table tops are screwed onto the frames and are therefore interchangeable. The edges are rounded-off 23 mm.

All our tables and chairs are fitted with synthetic sliders. Four felt sliders are available per table or chair for an additional charge (item no. 190 052 99).



**Round table Ø 100 cm**

item no.	height
112 506 ..	40
112 500 ..	46
112 501 ..	53
112 502 ..	59
112 503 ..	64
112 504 ..	71
112 505 ..	76

**Round table Ø 120 cm**

item no.	height
112 516 ..	40
112 510 ..	46
112 511 ..	53
112 512 ..	59
112 513 ..	64
112 514 ..	71
112 515 ..	76

Tables are available with the above laminated surfaces.

81	82	83	84
85	86	87	88
89	90	91	92

Our tables are available with the following surfaces :

## Laminated surface with a beech pattern

The surface is very hard, saliva-firmed and easy to care. It is scratch-firmed.

item no. .... 70



## Laminated surface sand-coloured or white

The surface is very hard, saliva-firmed and easy to care. It is likewise scratch-firmed.

item no. .... 71, sand-colour

item no. .... 72, white

May you offer an other colour of the table top write down the correctly number please.

item no. .... 81 to 92.



## Beech wood laminboard

Solid beech block board with formaldehydfree natural wax

item no. .... 50





**Square table 60 x 60 cm**

item no.	height
112 106 ..	40
112 100 ..	46
112 101 ..	53
112 102 ..	59
112 103 ..	64
112 104 ..	71
112 105 ..	76

**Square table 80 x 80 cm**

item no.	height
112 116 ..	40
112 110 ..	46
112 111 ..	53
112 112 ..	59
112 113 ..	64
112 114 ..	71
112 115 ..	76



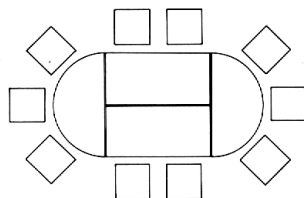
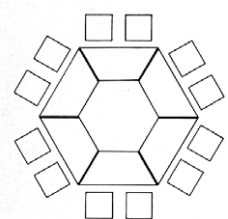
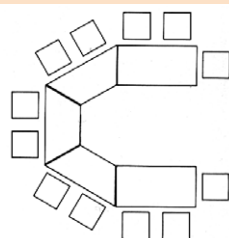
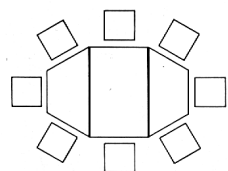
**Semi-circular table Ø 120 cm**

item no.	height
112 406 ..	40
112 400 ..	46
112 401 ..	53
112 402 ..	59
112 403 ..	64
112 404 ..	71
112 405 ..	76



**Trapeze table 120 x 60 / 60 / 60 cm**

item no.	height
112 306 ..	40
112 300 ..	46
112 301 ..	53
112 302 ..	59
112 303 ..	64
112 304 ..	71
112 305 ..	76



**Special preparation for furniture**

**500 ml**

190 991 00

**270 ml**

190 992 00



**not illustrated**

**Set for care the furniture**

**with 300 ml varnish, 100 ml wax and wool of steel**

190 990 00

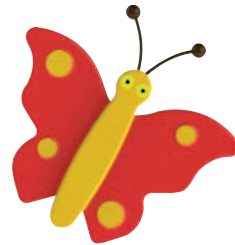




Table with laminated surface red (81)

### Tables with round legs

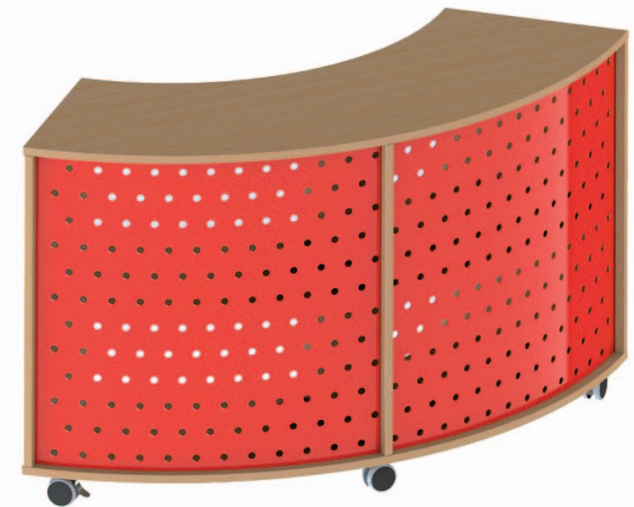
Tables with round legs provide more legroom for educator and are suitable for wheelchair users.  
The round leg with small frame is glued and screwed.  
The result is a solid connection.



down side of table top



On request all tables are available with a set of casters.



**Counter with 5 casters**  
2 can be fixed, rear wall perforated plate,  
open, partition, 1 shelf in each section  
**W 140 H 81 D 58**

113 081 00  
113 081 00 m

## Playing tables



Square playing table with material bowl in the centre  
**W 80 H 58 D 80**  
 123 312 00



Table setting options for employment



Round playing table with material bowl in the centre  
**Ø 110 H 58**  
 123 322 00



Quadrantal table  
**W 140 H 73 D 40**  
 123 337 00



On this page all table tops are 3 cm thick and sealed with two layers of DD-varnish.

## Single hooks

190 203 ..

190 202 ..

Double hooks

Triple hooks that turn

brown ... .. 81



yellow ... .. 82



blue ... .. 83



red ... .. 84



green ... .. 85



black ... .. 86



white ... .. 87



bordeaux ... .. 88



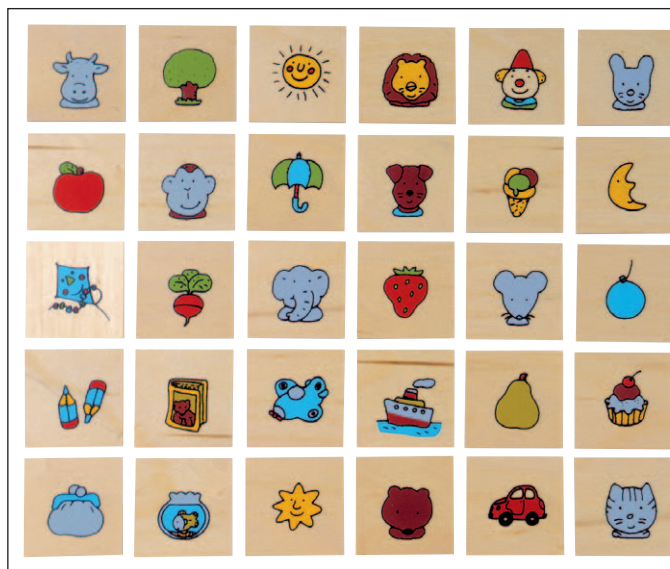
dark blue ... .. 89



dark green ... .. 90



Single hooks on request!



Identity pictures Set 1 4.5 x 4.5 cm

117 501 99

wood

117 511 99

stickers



Identity pictures Set 3 4.5 x 4.5 cm

117 503 99

wood

117 513 99

stickers



Identity pictures Set 2 4.5 x 4.5 cm

117 502 99

wood

117 512 99

stickers



Identity pictures Satz 4 4.5 x 4.5 cm

117 504 99

wood

117 514 99

stickers



# Cloakrooms by BEKA – creative and flexible



Cloakroom tree see rubric  
Accessories & Materials



**The Cloakroom is the first impression the visitor gets of your establishment. Through various arrangements of the cloakroom furniture, be it against the wall or free-standing in the room, functionality and openness are ensured.**





Extra charge per triple hook  
117 701 ..



**Cloakroom shelf with 3 compartments  
and 3 double hooks**

**W 60 H 20 D 18**  
117 300 ..

**Cloakroom shelf with 4 compartments  
and 4 double hooks**

**W 80 H 20 D 18**  
117 301 ..

**Cloakroom shelf with 5 compartments  
and 5 double hooks (illustrated)**

**W 100 H 20 D 18**  
117 302 ..

**Cloakroom shelf with 6 compartments  
and 6 double hooks**

**W 120 H 20 D 18**  
117 303 ..

**Cloakroom shelf with 7 compartments  
and 7 double hooks**

**W 140 H 20 D 18**  
117 306 ..

Complete the item no. with the right colour of  
the hooks (page 34).



**Cloakroom stand support with back  
height 130 cm**

117 200 00	<b>W</b> 60
117 201 00	<b>W</b> 80
117 202 00	<b>W</b> 100
117 203 00	<b>W</b> 120
117 206 00	<b>W</b> 140

**height 150 cm**

117 210 00	<b>W</b> 60
117 211 00	<b>W</b> 80
117 212 00	<b>W</b> 100
117 213 00	<b>W</b> 120
117 216 00	<b>W</b> 140

**Cloakroom bench for 3 children**

**W 60 H 34 D 35**

117 000 00	with cubby-holes
117 900 00	without cubby-holes

**W 60 H 38 D 35**

117 010 00	with cubby-holes
117 910 00	without cubby-holes

**Cloakroom bench for 4 children**

**W 80 H 34 D 35**

117 001 00	with cubby-holes
117 901 00	without cubby-holes

**W 80 H 38 D 35**

117 011 00	with cubby-holes
117 911 00	without cubby-holes

**Cloakroom bench for 5 children (illust.)**

**W 100 H 34 D 35**

117 002 00	with cubby-holes
117 902 00	without cubby-holes

**W 100 H 38 D 35**

117 012 00	with cubby-holes
117 912 00	without cubby-holes

**Cloakroom bench for 6 children**

**W 120 H 34 D 35**

117 003 00	with cubby-holes
117 903 00	without cubby-holes

**W 120 H 38 D 35**

117 013 00	with cubby-holes
117 91300	without cubby-holes

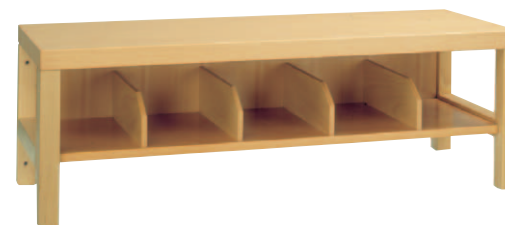
**Cloakroom bench for 7 children**

**W 140 H 34 D 35**

117 006 00	with cubby-holes
117 906 00	without cubby-holes

**W 140 H 38 D 35**

117 016 00	with cubby-holes
117 916 00	without cubby-holes







The spacing board fill in the distance between the cloakroom stand outer corner

**Spacing board for bench**  
 117 103 00 height 34 cm  
 117 113 00 height 38 cm  
**Spacing board for shelf**  
 117 104 00



**Cloakroom outer corner without hooks**  
**W 18 H 20 D 18**  
 117 304 00



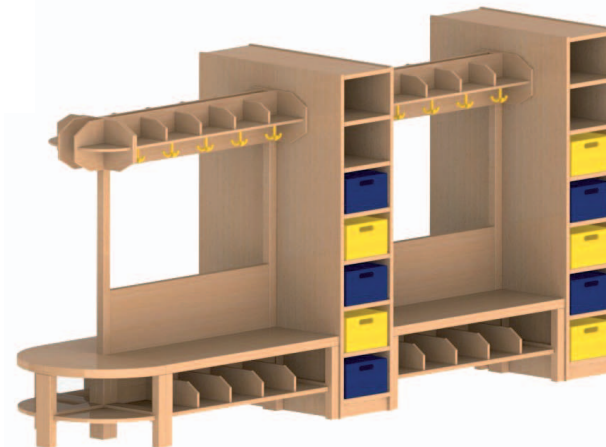
**Cloakroom bench outer corner**  
**W 35 H 34 D 35**  
 117 101 00  
**W 35 H 38 D 35**  
 117 111 00



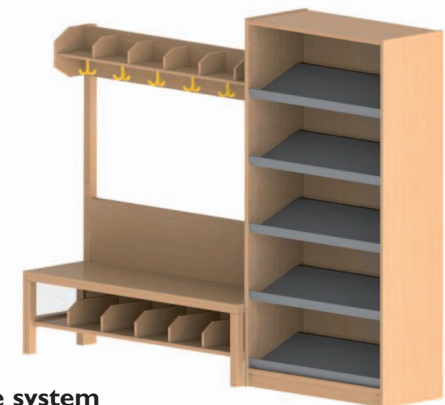
**Cloakroom shelf inner corner without hooks**  
**W 35 H 20 D 35**  
 117 305 00



**Cloakroom bench inner corner**  
**W 35 H 34 D 35**  
 117 102 00  
**W 35 H 38 D 35**  
 117 112 00



option for wardrobe system







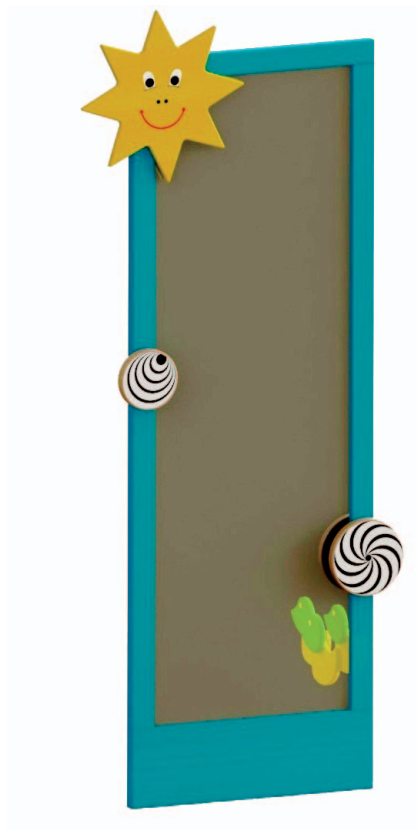
**Wall mirror (laminated safety mirror)**

	Width	Height
117 401 99	75	50
117 402 99	75	75
117 403 99	75	100



**Trolley for bags with 28 hooks and 4 rollers, 2 of which can be lockes**

**W 71 H 86 D 40**  
117 601 00



**Wall mirror with decoration**

**W 55/67 H 160/170 D 4**  
117 404 ..



**Hook board with 15 single hooks**

**W 80 H 60**  
117 471 00



**Washroom rail in a beech pattern includes compartment for toothbrush mugs**

117 451 ..

**Washroom rail without compartment (not illustrated)**

117 452 ..

Complete the item no. with the right colour of the hooks (page 34).



**Washroom rail, synthetic in white includes compartment for toothbrush mugs**

117 453 ..

The washroom rails can be up to 200 cm long. For each metre in length 8 double hooks are attached, with a distance of about 12 cm between them.



Cloakroom with a duck family, 4 hooks  
W 60 H 31  
117 803 00



Cloakroom with a tortoise, 4 hooks  
W 60 H 35  
117 802 00



Cloakroom with a hedgehog, 4 hooks  
W 60 H 39  
117 801 00



Cloakroom with a butterfly, 4 double hooks  
W 59 H 40  
117 805 00



Cloakroom bench with rear wall for 5 children,  
seat height 34 cm  
W 100 H 84 D 36  
117 143 00

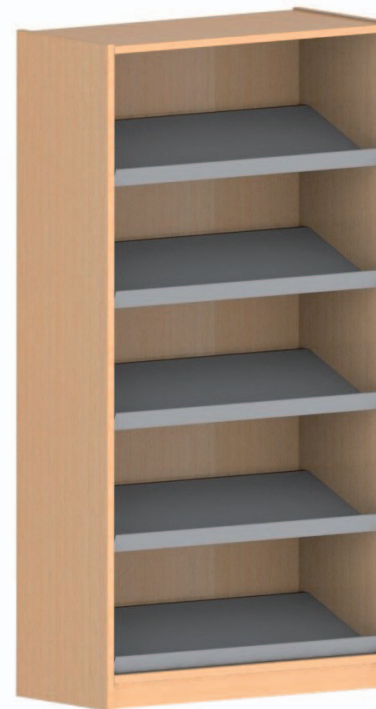


Cloakroom bench with rear wall for children,  
seat height 34 cm  
W 120 H 84 D 36  
117 144 00





**Boot trolley**  
with 3 removable plastic boards,  
4 lockable rollers  
**W 102 H 97 D 40**  
I 17 602 00 m material beech laminated



**Boot cupboard**  
with 5 removable plastic boards  
**W 78 H 150 D 35**  
I 17 606 00 m



**Wardrobe trolley with mirror on 5 rollers,**  
two sides with each 3 double hooks, backside  
synthetic mirror, frontside clothes rail  
**Ø 70 cm, height 126 cm**  
I 17 605 00 m material beech laminated

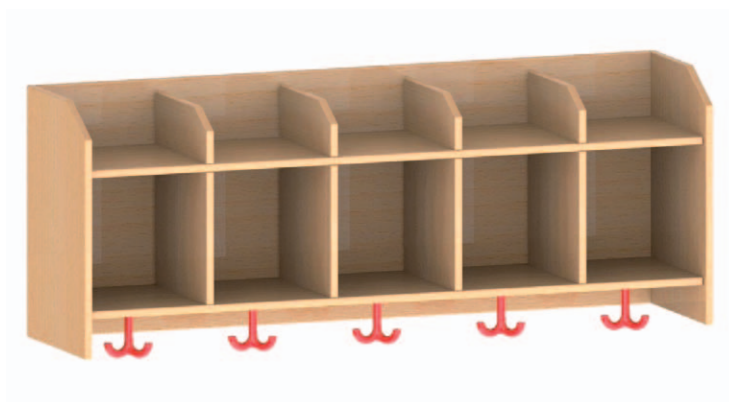
**Fachboden für Garderoben- und Infowagen**  
**45.7 x 44.4 cm**  
I 90 155 00 m material beech laminated

In a nursery kindergarten or primary school the trolley for cloakroom brings about a nice solution in everyday life. You need an additional place in a cloakroom or the children like to play „theatre“. In these situations you can use the trolley.



**Please contact us!**  
**We plan your own concept.**

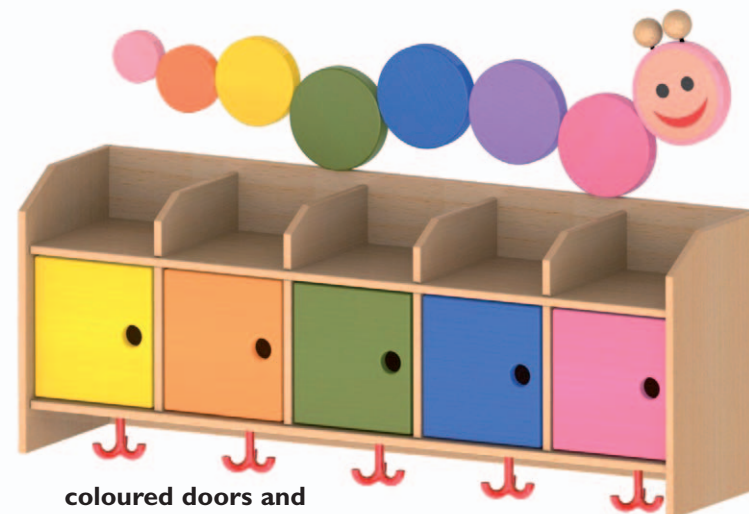




**Cloakroom shelf  
with open compartments and  
triple hooks  
for 4 children (not illustrated)  
W 80 H 36 D 25  
117 331 00**

**for 5 children  
W 100 H 36 D 25  
117 332 00**

**for 6 children (not illustrated)  
W 120 H 36 D 25  
117 333 00**



**coloured doors and  
decoration on request**



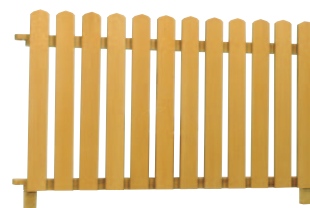
**Wardrobe with small doors and triple hooks  
for 2 children (not illustrated)**

**W 61 H 160 D 35  
117 197 00 m**

**for 3 children  
W 90 H 160 D 35  
117 198 00 m**

**for 4 children  
W 120 H 160 D 35  
117 199 00 m**

# Room partitions by BEKA – arouses enthusiasm



**Fence for room partition**  
W 115 H 60  
114 233 00



**Roof section for room partition**  
W 65 H 16 D 55  
114 232 ..



**Wall attachment (pair)**  
190 071 ..



**Let us help you set up  
your rooms. Please don't  
hesitate to contact us.**



**Standard parts for room partitions  
or fences (piece)**  
190 073 .. für room partition  
190 074 .. für fences



**Combination of room partitions**  
Standard parts for room partitions or  
fences allow putting up free in the room.



**Corner shelf partition  
weighted bottom**  
B 55 H 162 T 55  
114 231 ..



Our complete colours please see on page 103 or visit our website.



The pictured room partitions offer many opportunities to optically divide of the doll's corner, reading or comfy corner. They also support the children's fantasy in role play and offer many drawing areas helping them to learn through play.

Please note that a maximum of 3 partitions are to be stood in a line or 4 in an arch or square. The beginning or end of a partition „chain“ must be attached to a wall, shelf, cupboard, playhouse or a partition shelf with a wall attachment. (All partitions pictured are delivered without staining.)





**Cork notice board, both sides**  
**W 82 H 133**  
 I14 202 ..



**Material wall, both sides**  
**W 82 H 133**  
 I14 204 ..



**Magnetic board / Chalk board**  
**W 82 H 133**  
 I14 203 ..



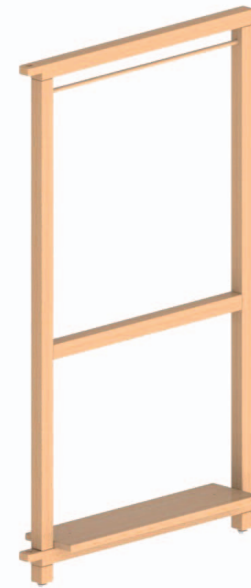
**Flower wall**  
**W 82 H 133**  
 I14 205 ..



**Punch and Judy theatre**  
**W 82 H 133**  
 I14 206 ..



**Shop**  
**W 82 H 133**  
 I14 207 ..



**Cloakroom**  
**W 82 H 133**  
 I14 221 ..

An example for combination:

Embroidery wall

W 82 H 133

114 219 ..

Flower wall with acrylic glass  
and shelf for dried flowers

W 82 H 133

114 220 ..

Drawing wall with paper roll

W 82 H 133

114 218 ..

individual paper roll

114 225 00



Plexiglass wall

W 82 H 133

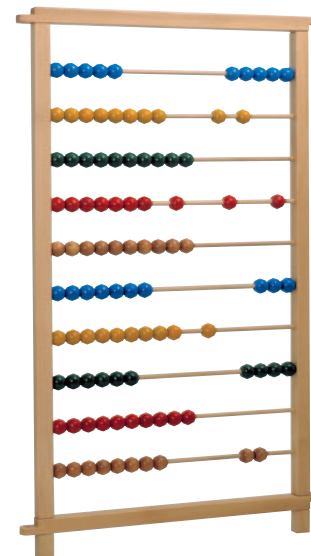
114 212 ..



Book shelf

W 82 H 133

114 213 ..



Calculating game

W 82 H 133

114 214 ..

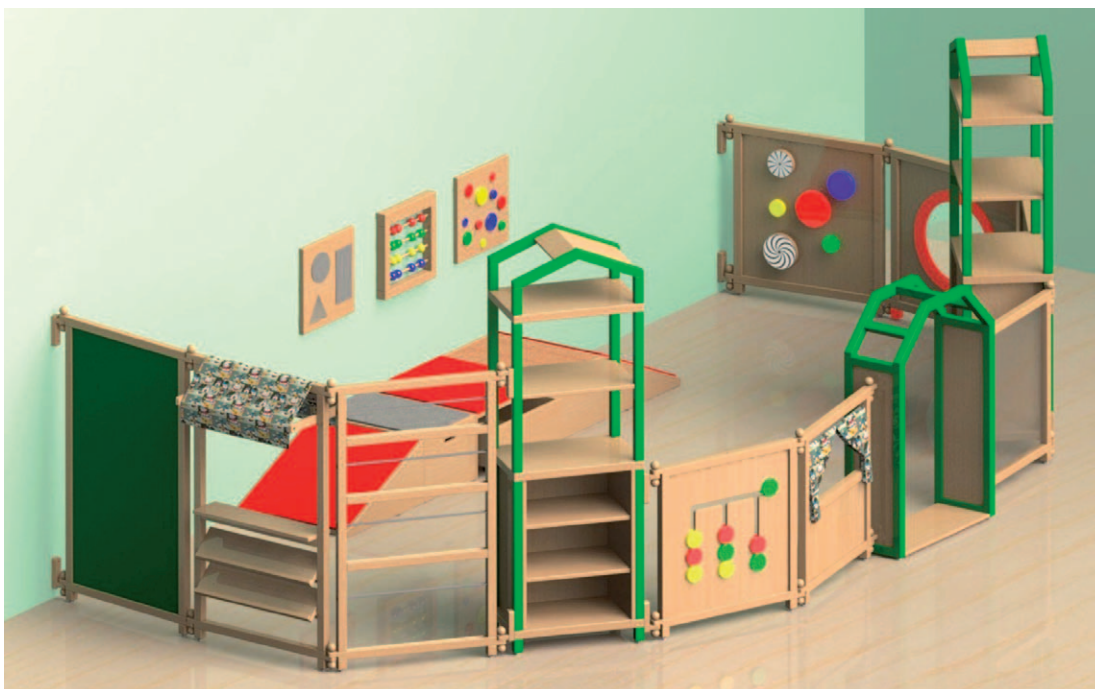


Waving frame (without deco)

W 82 H 133

114 226 ..





**Gate arch**  
W 74 H 113 D 30  
114 241 ..



**Mirror wall / Cork notice board wall**  
W 82 H 133  
114 216 ..



**double door**  
W 82 H 133  
114 210 ..



**front door**  
W 82 H 133  
114 228 ..

#### Room partitions W 82 cm H 80 cm



**Material wall, both sides**  
114 284 ..



**Rods**  
114 285 ..



**Coloured acrylic plates**  
114 286 ..

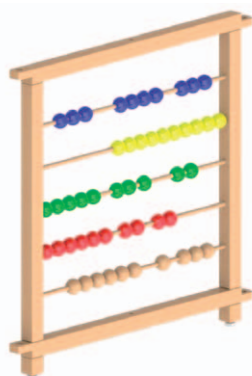


**Gate arch**  
114 283 ..





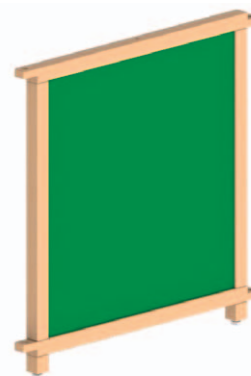
**Plexi glass**  
114 262 ..



**Calculating game**  
114 264 ..



**Cork notice board,  
both sides**  
114 270 ..



**Magnetic board /  
chalk board**  
114 266 ..



**Beech wood**  
114 267 ..



**Punch and Judy theatre**  
114 272 ..



**Shop**  
114 273 ..



**Flower wall**  
114 275 ..



**Round window**  
114 276 ..



**Coloured lines**  
114 277 ..



**Coloured rotation plates**  
114 278 ..



**Mirror / Cork**  
114 265 ..

**Please use  
the versatile  
options of  
combinations.**



# Playhouses by BEKA – real joy of playing

All building components are made of solid wood and can be put together individually.  
The false ceiling is made of 1.5 cm thick laminated wood boards which are screwed to the 9.5 cm thick overhead beam.  
The construction is safety and steady. It is not necessary an extra fastening at a wall.

You should think about some points:

- The height of the room may be 2.55 m.
- Please don't stand up any furniture on the „second floor“.
- The children should not grasp appliance or lamps.

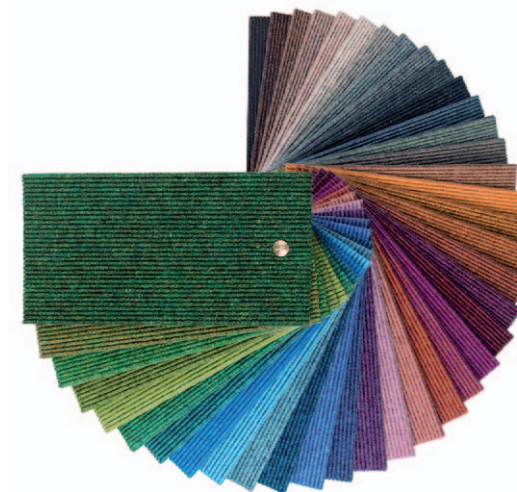
Frames and corner posts are available in different stains. Please choose a stain of our palette, see page 103.

Please add the two end numbers to the item no. for the type of Tretford carpet desired, see page 75 / 103.



Color selection for carpets  
Material: Tretford  
see page 75 (Platforms)

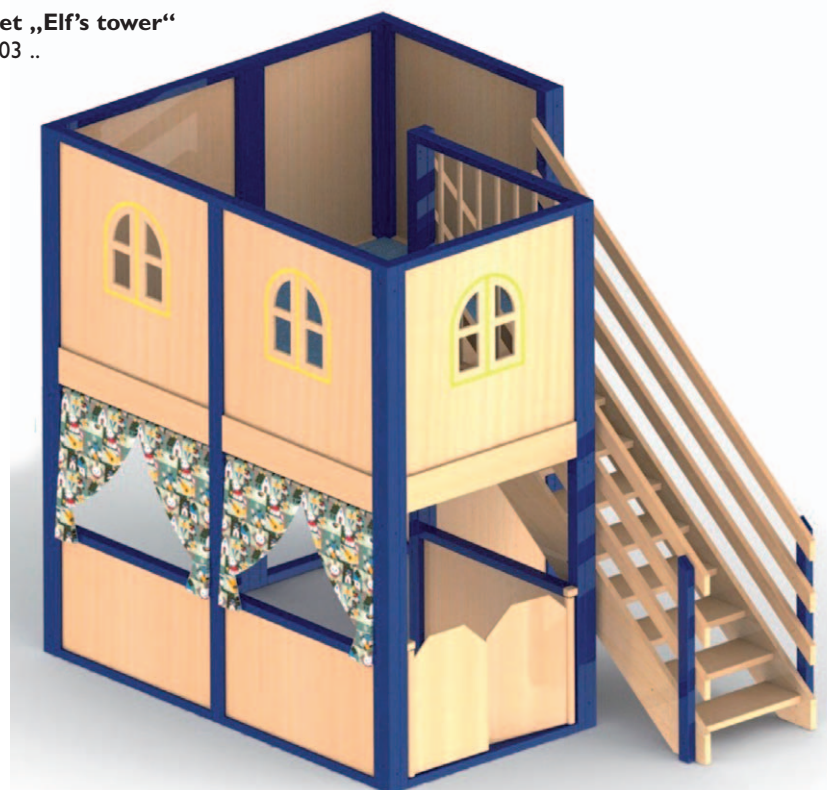
The full range of colors can be found on page 103 and on our website.



**Playhouse „Elf's tower“**  
**W 186 H 230 D 273**

Platform height 136 cm  
120 803 ..

**Carpet „Elf's tower“**  
120 103 ..





Our complete palette of colours you can find on page 103 or visit our website.



**Playhouse „Bistro“**  
(without decoration and furniture)  
**W 257 H 203 D 242**  
Platform height 108 cm  
120 808 ..

**Carpet „Bistro“**  
120 108 ..



Playhouses are an ideal addition to each group room. Through the innumerable combination of the individual components it is possible to adapt each one to the customer's wishes. Whether it is a small or a larger one, it is possible to gain more space by a „second floor“ which can be used as a play area, for cuddling or as an area for being alone. Platform heights from 42 to 136 cm are possible. If the height of parapet 90 cm is not sufficient, then we have roof and other sections to add. The podium floors are made of plywood. The carpet on the wooden floor keeps noise when children hop up.





**Playhouse „Pirate cave“**  
**W 318 H 254 D 183**

Platform heights 82 and 108 cm  
 120 809 ..

**Carpet „Pirate cave“**  
 120 109 ..



**Playhouse „Hansel and Gretel“**

incl. climbing bow and part with laminated safety mirror

**W 383 H 245 D 218**

Platform height 108 cm

120 810 ..

**Carpet „Hansel and Gretel“**

120 110 ..



**Playhouse „Games world“**

incl. slide, laminated safety glass and mirror;  
 wall games, wall domino and calculating game

**W 350 H 218 D 269**

Platform heights 54 and 82 cm

120 811 ..

**Carpet „Games world“**

120 111 ..



### Playhouse „Tunnel castle“

incl. tunnel, climbing bow and slide

**W 560 H 203 D 428**

Platform height 108 cm

I20 901 ..



### Carpet „Tunnel castle“

I20 201 ..

### Playhouse „Mouse castle“

incl. climbing bow, slide, porthole, wall games, for example wall domino

**W 310 H 231 D 300**

Platform height 95 cm

I20 906 ..



### Carpet „Mouse castle“

I20 206 ..



### Playhouse „Country house“

incl. slide, porthole, wall game and laminated safety glass

**W 358 H 218 D 257**

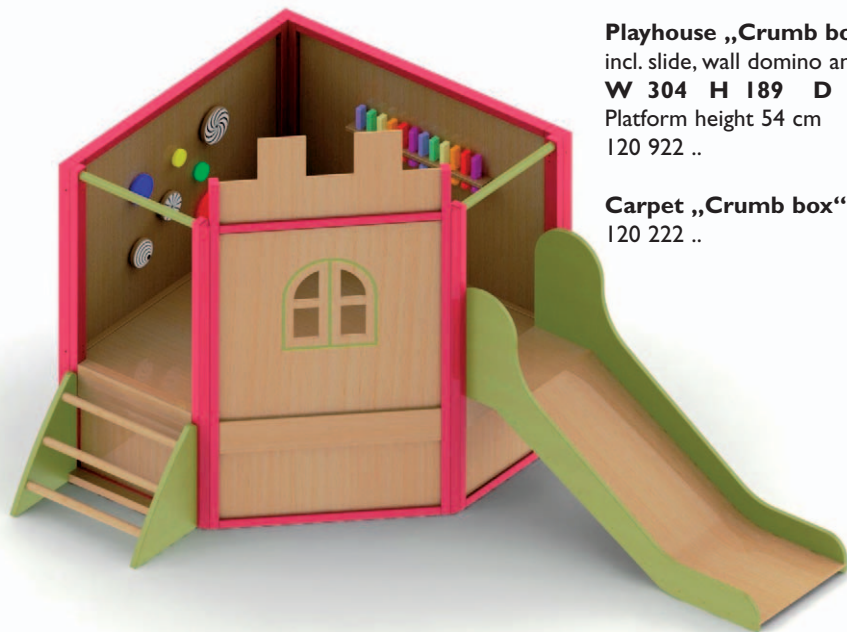
Platform height 82 cm

I20 812 ..

### Carpet „Country house“

I20 112 ..



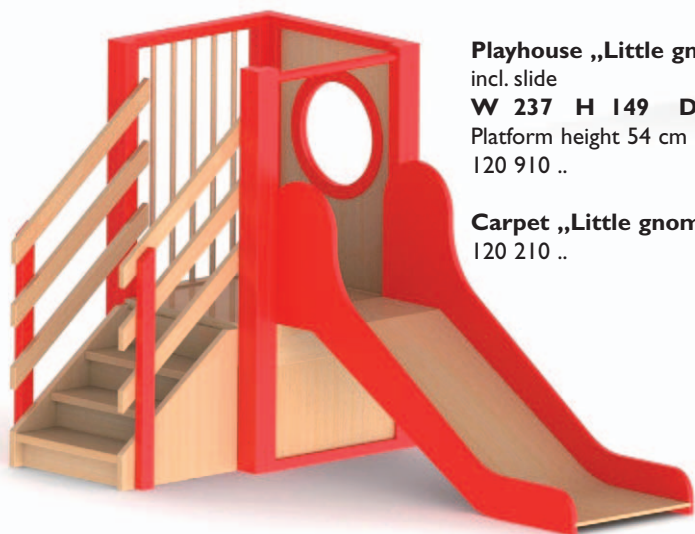


**Playhouse „Crumb box“**  
incl. slide, wall domino and rotation plates  
**W 304 H 189 D 192**  
Platform height 54 cm  
120 922 ..

**Carpet „Crumb box“**  
120 222 ..

**Playhouse „Little rascals“**  
incl. slide, climbing bow, laminated safety mirror  
**W 310 H 190 D 121**  
Platform height 54 cm  
120 813 ..

**Carpet „Little rascals“**  
120 113 ..



**Playhouse „Little gnomes“**  
incl. slide  
**W 237 H 149 D 142**  
Platform height 54 cm  
120 910 ..

**Carpet „Little gnomes“**  
120 210 ..

**Playhouse „Clementine“**  
incl. slide and porthole  
**W 340 H 162 D 154**  
Platform height 68 cm  
120 852 ..

**Carpet „Clementine“**  
120 152 ..



**Castles for smaller rooms!**





**Playhouse „Sleeping beauty“**

incl. slide and flower box

**W 490 H 245 D 177**

Platform height 108 cm

120 908 ..

**Carpet „Sleeping beauty“**

120 208 ..



**Playhouse „Knight's castle“**

incl. flower boxes

**W 286 H 272 D 280**

Platform height 136 cm

120 807 ..

**Carpet „Knight's castle“**

120 107 ..



**Playhouse „Rapunzel“** for wall mounting  
incl. curtains, laminated safety glass and porthole

**W 226 H 250 D 270**

Platform heights 136 cm

120 814 ..

**Carpet „Rapunzel“**

120 114 ..

**Please  
contact us!  
We plan your  
own playhouse.**



# Children's kitchen by BEKA – Children's dreams come true

## Armchairs & Sofa

Children's armchair  
seat height 27  
**W 73 H 50 D 60**  
121 811 99

Armchair for  
primary pupil  
seat height 37  
**W 80 H 60 D 60**  
121 821 99



Children's two-seater  
seat height 27  
**W 108 H 50 D 60**  
121 812 99

Two-seater for  
primary pupil  
seat height 37  
**W 140 H 60 D 60**  
121 822 99



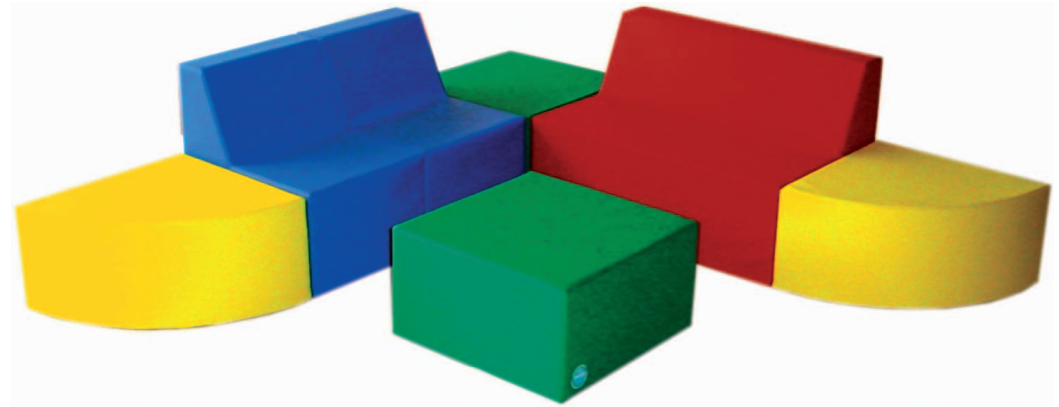
not illustrated

Children's three-seater  
seat height 27  
**W 160 H 50 D 60**  
121 813 99

Two-seater for primary pupil  
seat height 37  
**W 190 H 60 D 60**  
121 823 99

The cover takes off by all armchairs,  
two-seaters and three-seaters.  
You can wash it by 30 °C,  
but don't take a spin- or clothes-dryer.

- foam material
- CFC-free
- other covers are possible



**"Multi"-Element-Set 7-piece**  
121 500 99

Consisting of 2 x cuboid green, 2 x quadrant yellow,  
2 x chair blue and 1 x sofa red.

As an individual living environment, as practical seating,  
and of course to play – the „Multi“-Elements can be in ways  
you've never used.

The floor is made of synthetic leather quality non-slip grey.  
The covers are in colored leather quality, stable foam filling  
RG 25/40.

dimensions of the individual elements:

cuboid:	<b>W 50 H 27 D 50</b>
quadrant:	<b>W 50 H 27 D 50</b>
chair:	<b>W 40 H 50 D 50</b> seat height appr. 27 cm
sofa:	<b>W 80 H 50 D 50</b> seat height appr. 27 cm

(The items are also available separately.)





**Children's kitchen unit „Anne“**  
3 hot plates, sink unit, open part, top open, 2 drawers  
W 102 H 120 D 32  
119 011 00



The children should learn by playing. Children's furniture is stimulating for playing highly imaginative and creative. They play the roles of the family at home and at the job. So they learn many things about the life. All children's furniture pictured here is made of beech laminated wood and is sealed with double layer of formaldehyde-free DD-varnish. The working tops are coated with melamine resin. They therefore repel water, are scratch-free and durable.



**Children's kitchen, open**  
3 hot plates, sink unit  
W 78 H 45 D 40  
119 080 00m



**Children's kitchen shelf**  
3 hot plates, sink unit, 1 door, 2 shelves  
W 110 H 73 D 40  
118 801 ..



**Children's kitchen shelf,  
with acrylic glass window, 3 hot plates,  
sink unit, 1 door, 2 shelves**  
W 110 H 140 D 40  
118 802 ..



**Children's kitchen shelf, with acrylic glass window  
and roof, 3 hot plates, sink unit, 1 door, 2 shelves**  
W 110 H 172 D 40  
118 803 ..





**Wall shelf, edges round**  
**W 36 H 24 D 14**  
 119 009 00



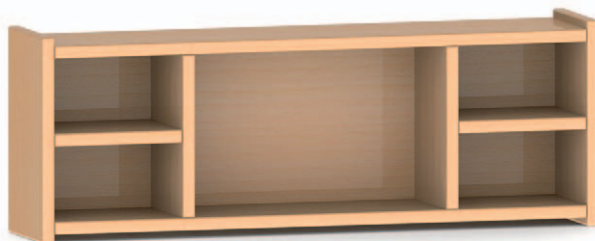
**Wall shelf, open compartments**  
**W 36 H 24 D 14**  
 119 008 00



**Children's plates cupboard**  
 1 adjustable shelf  
**W 68 H 56 D 32**  
 119 006 00



**Wall shelf with drawers**  
**W 36 H 24 D 14**  
 119 007 00



**Wall shelf, open compartments**  
**W 68 H 24 D 14**  
 119 010 00



**Children's washing machine**  
**W 36 H 56 D 32**  
 119 001 00



**Children's cooker**  
 1 adjustable shelf  
**W 36 H 56 D 32**  
 119 002 00



**Children's sink unit**  
 1 adjustable shelf  
**W 36 H 56 D 32**  
 119 003 00



**Children's double cupboard**  
 cooker/sink, 1 adjustable shelf  
 1 verstellbarer Fachboden  
**W 68 H 56 D 32**  
 119 005 00



**Children's fridge**  
 1 adjustable shelf with egg  
 compartment and bottle holder  
**W 36 H 56 D 32**  
 119 004 00



**Children's table, square**  
**W 50 H 44 D 50**  
 119 028 00



**Children's table, round**  
**Ø 60 cm, H 44**  
 119 029 00



**Children's dish washer**  
 two plastic baskets included  
**W 36 H 56 D 32**  
 119 013 00

### Combination of table or chair or stool

3 varying seat heights 15, 22 and 34 cm  
 or 18, 26 and 34 cm



**Combination stool**  
**W 35 H 35 D 35**  
 119 050 00  
**W 40 H 42 D 35**  
 119 052 00



### Kitchen corner from BEKA – invite for cooking!

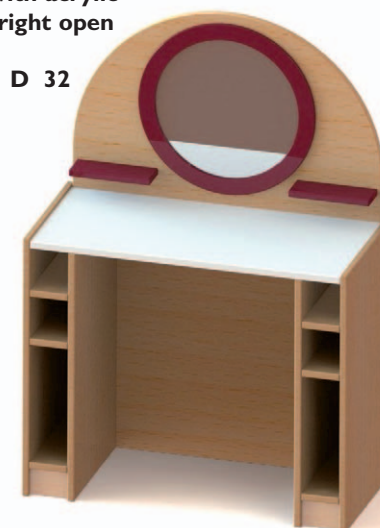
Coloured accents give the personel touch.

### Kitchen pavilion (without equipment)

**W 185 H 140 D 153**  
 119 091 00

### Dressing table with acrylic mirror, left and right open compartments

**W 68 H 97 D 32**  
 119 072 ..



### Combination bench

**W 70 H 35 D 35**  
 119 051 00

**W 70 H 42 D 35**  
 119 053 00





**Children's two-seater**  
seat height 30 cm  
**W 68 H 52 D 32**  
119 025 ..



**Children's single-seater**  
seat height 30 cm  
**W 36 H 52 D 32**  
119 026 ..



**Children's chest bench**  
seat height 30 cm  
**W 68 H 52 D 32**  
119 036 ..



**Changing table padding**  
foam material, 2 cm thick, with burred  
ribbon for children's plates cupboard  
**W 65 D 32**  
119 022 ..



**Children's upholstered stool**  
with hand hole  
**W 28 H 31 D 28**  
119 027 ..



**Children's wardrobe**  
1 shelf, 1 clothes rail  
**W 36 H 80 D 32**  
119 021 00



**Children's bed with mattress**  
**W 55 H 28 D 28**  
119 023 ..

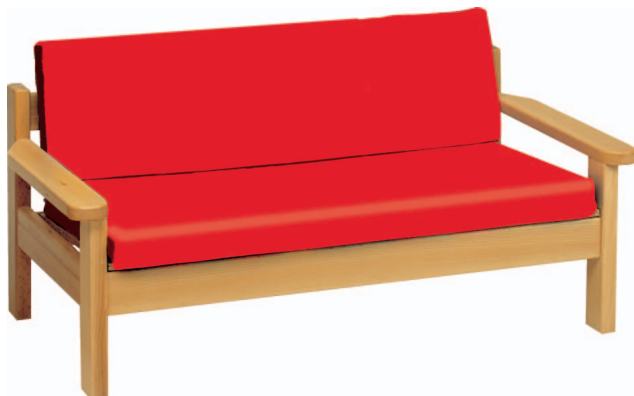


**Children's couch bed with mattress**  
**W 73 H 15 D 44**  
119 024 ..



**Children's cradle with mattress**  
**W 55 H 28 D 34**  
119 037 ..





**Children's sofa**  
seat height 26 cm  
**W 80 H 44 D 40**  
119 031 ..



**Children's armchair**  
seat height 26 cm  
**W 40 H 44 D 40**  
119 030 ..

The various covers are on page 103 or  
visit our website.



**Children's corner bench**  
seat height 30 cm  
**W 130/130 H 56 D 30**  
119 032 ..

**Corner bench**  
**W 30 H 56 D 30**  
119 034 ..

**Single bench**  
**W 100 H 56 D 30**  
119 033 ..



**Children's table, square with legs**  
**W 50 D 50**  
119 151 00      Height 46  
119 152 00      Height 52



**Children's table, round with legs**  
**Ø 60 cm**  
119 161 00      Height 46  
119 162 00      Height 52

Children's kitchen has the same face as our group room cupboards. So it is good looking together in a room. Coloured hand grips with hand-hole or amusing coloured HEWI-grips make a funny kitchen. The colours of grips are the same as hooks on page 34.

Hand grips with hand-hole is our standard. Would you like a door with HEWI-grip, please replace the first digit of item number through 4. (example 115 501 00 = 415 501 00)

The price of lower cupboards includes worktops, as well as the necessary wall strips. This worktop made at one piece for your individually designed kitchen without any additional costs.

As a standard fitting we include a beech patterned laminated wood worktop surface.

Alternatively we can deliver the worktop in a white marble patterned laminated surface. Your wishes write down please.

Kitchen units are available suitable for adults working height of 87 cm. Please take the item number 125 ... (example 125 501 00)

The necessary electrical and sanitation installations have to be fitted by a local expert.

## Wall-cupboard, width 52 cm, height 40 cm



1 door, 1 adjustable shelf

W 52 H 40 D 32

115 511 00 door left

115 512 00 door right (not illust.)



1 door with acrylic glass, 1 adjustable shelf

W 52 H 40 D 32

115 515 00 door left

115 516 00 door right (not illust.)



open, 1 adjustable shelf

W 52 H 40 D 32

115 529 00

Wall-cupboard, variable sizes, open, 1 adjustable shelf (not illust.)

W 25 - 51 H 40 D 32

115 534 00

## Lower kitchen cupboard, width 52 cm and 35 cm, height 70 cm



open,

1 adjustable shelf

W 52 H 70 D 58

115 504 00

Lower cupboard, variable sizes, open, 1 adjustable shelf (not illust.)

W 25 - 51 H 70 D 58

115 518 00



1 door,

1 adjustable shelf

W 52 H 70 D 58

115 501 00 door left

115 502 00 door right (not illust.)



4 drawers

W 52 H 70 D 58

115 503 00

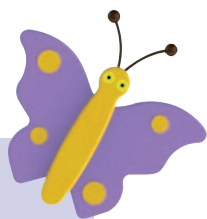


4 drawers

W 35 H 70 D 58

115 403 00

# Kitchens by BEKA – individually for you



**Please  
contact us!**

Create your own kitchen  
with our help!



Stirring the pastry, backing cakes and biscuits, choosing the ingredients for a delicious soup and learning about the correct diet through playing – all this and more can be offered by the children's kitchen.

Perfect high quality kitchen technology together with stable cupboards at an ideal height for children make cooking and backing „childrens play“.



**Children's kitchen**



## Wall shelves



**Corner wall shelf**  
1 non-adjustable shelf  
**W 32 H 40 D 32**  
115 508 00



**Wall-cupboard over cooker**  
open, 1 adjustable shelf  
**W 60 H 40 D 32**  
115 528 00



**Wall shelf**  
**W 52 H 20 D 20**  
115 530 00  
**Wall shelf**  
**W 102 H 20 D 20**  
115 531 00

**Wall shelf over cooker**  
**W 60 H 20 D 20**  
115 532 00

**Wall shelf, variable sizes**  
**W 25 - 51 H 20 D 20**  
115 535 00



**Inner corner wall shelf**  
**W 60 H 40 D 60**  
115 509 00

Children's kitchen – We bring colour to your life!



## Lower kitchen cupboard, height 70 cm



**Kitchen corner shelf**  
1 non-adjustable shelf  
**W 58 H 70 D 58**  
115 507 00



**2 large drawers**  
**W 52 H 70 D 58**  
115 510 00



**2 small and 1 large drawers**  
**W 52 H 70 D 58**  
115 517 00



**1 small drawer,**  
**1 door, 1 adjustable shelf**  
**W 52 H 70 D 58**  
115 563 00 door left  
115 564 00 door right (not illust.)

## Wall-cupboard with partition, width 102 cm, height 40 cm



Children's kitchen – corner variant



2 doors, each section 1 adjustable shelf  
**W 102 H 40 D 32**  
 115 513 00



2 doors with acrylic glass, each section 1 adjustable shelf  
**W 102 H 40 D 32**  
 115 514 00



open, each section 1 adjustable shelf  
**W 102 H 40 D 32**  
 115 527 00

## Lower kitchen cupboard, height 70 cm



1 partition, 2 doors, each section 1 adjustable shelf  
**W 102 H 70 D 58**  
 115 521 00



left door, 1 adjustable shelf, right 4 drawers (not illustrated)  
**W 102 H 70 D 58**  
 115 525 00  
 right door, 1 adjustable shelf, left 4 drawers  
**W 102 H 70 D 58**  
 115 526 00



Lower corner kitchen cupboard with revolving carousel and 1 door, worktop corner connection included  
**B 110 H 70 T 58**  
 115 505 00 for left corner  
 115 506 00 for right corner (not illust.)

## Lower kitchen cupboard, height 70 cm



**Sink unit, single sink**

**W 52 H 70 D 58**

115 519 00

door left

115 520 00

door right (not illust.)



**Sink unit, single sink with middle column, 2 doors**

**W 102 H 70 D 58**

115 522 00

sink on left (not illust.)

115 523 00

sink on right



**Sink unit, 2 sink with middle column, 2 doors**

**W 102 H 70 D 58**

115 524 00

## Adults kitchen to preparing baby food



**2 hot plates, 1 door left, 1 adjustable shelf**

**W 52 H 70 D 58**

115 552 00

door left

115 553 00

door right (not illust.)



**Cooker cupboard with cooker 380/220 V**

**W 60 H 70 D 58**

115 549 00 (not illust.)

**Cooker cupboard included built-in electric oven 380/220 V and 4-ring ceramic hob**

**W 60 H 70 D 58**

115 550 00



**Ventilation hood**

**W 60 H 15 D 50**

115 551 99



**Safety guard for pots chromed, foldable, simple assembly through 2 screw clamps**

**W 68.5 H 18 D 15.8**

115 554 99



**Dowel holder**

115 591 99



**Double rubbish bin**

115 592 99

**Do bridge a unit from the cupboard to the wall or between the cupboards it is possible to continue the worktop, depth 60 cm**

**price pro cm (not illustrated)**

115 560 70 material beech laminated

115 560 72 white marbled





#### Crockery cupboard

1 door, 4 adjustable shelves

**W 52 H 160 D 58**

115 555 00 door left

115 556 00 door right (not illustrated)

#### Multi-purpose cupboard

1 door, without shelves

**W 52 H 160 D 58**

115 557 00 door left

115 558 00 door right (not illustrated)

#### shelf for multi-purpose cupboard

**W 48 D 54 (not illustrated)**

190 158 00

#### Hanging basket for multi-purpose cupboard with steel synthetic coated

**W 48 H 7.5 (not illustrated)**

190 159 00 depth 11 cm

190 160 00 depth 16 cm



#### High cupboard with built-in fridge

110 litres, incl. 13 litre 4-star freezer

**W 60 H 160 D 58**

115 540 00 door left (not illustrated)

115 545 00 door right

#### Small fridge under constructable, volume 92 l, incl. small freezer (not illustrated)

**W 55.3 H 63 D 60**

115 546 00 door on left or right possible



#### Serving trolley

**W 71 H 87 D 40**

115 951 00



#### Our service for you!

We plan your kitchen according  
to your wishes.

#### Children's kitchen – kitchen block used from both sides!



## Sport and Creativity have priority



### Multi-purpose gymnastics wall, 5 sections (fixed to wall)

**W 400/500 H 215** (distance from wall 40 cm)

122 212 00

consists of: wall bars section with 15 rungs, climbing net section, wall bars section with 6 rungs, climbing poles section, climbing rope or adjustable horizontal bar swiveling

⇒ Please specify in your order, such as the swiveling element is to be manufactured.

In the case of floor heating additional attachments are necessary at an extra charge.



### Folding gymnastics wall, 4 sections

**W 200 H 223 D 100**

122 200 00

consists of:

wall bars section with 14 rungs  
climbing rope section  
climbing net section  
horizontal bar section

### Set of mats for gymnastics wall,

4 sections, total area 8 m<sup>2</sup>

122 203 99



### Multi-purpose gymnastics wall, permanent, 3 sections (fixed to wall)

**W 300 H 215** (distance from wall 40 cm)

122 211 00

consists of:

wall bar section with 14 rungs  
climbing net section  
climbing poles section

### Ladder covering three areas, 9 rungs, with hooks

**L 320 W 45**

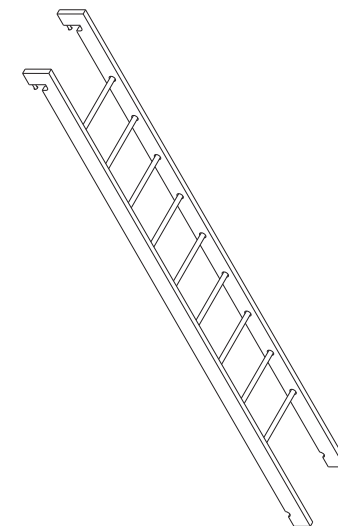
122 258 00

### Ladder covering two areas, 7 rungs, with hooks

(not illustrated)

**L 220 W 45**

122 259 00





Individual sections can be delivered (incl. attachments distance from wall 40 cm):

**Wall bars section  
with 15 rungs**  
W 100 H 215  
122 251 00

**Wall bars section  
with 6 rungs**  
W 100 H 215  
122 252 00

**Climbing net section**  
W 100 H 215  
122 253 00

**Climbing poles section**  
W 100 H 215  
122 254 00

**Free-climbing wall**  
W 100 H 215  
122 263 00

plate with non-slip plastic coating,  
incl. 10 climbing holds

**Slides for gymnastic walls  
width 38 cm (not illust.)**  
122 260 00      Length 200 cm  
122 261 00      Length 300 cm

#### Attention!

The individual units are standardly fixed on the floor with angles. With underfloor heating surcharge additional mounting hardware is required.



Sport, play and movement help develop motor movements, help to stay healthy and are just plain fun for children. In this case it is necessary to have correct, safe equipment ideal for children. Therefore the items on the next few pages have the GS seal and can be identified by their exceptional stability, function and diverse areas of exploitation.



**Let us help you set up your rooms. Please don't hesitate to contact us.**





#### **Folding gymnastics wall, 6 sections**

**W 300 H 223 D 100**

122 201 00

consists of:

wall bars section with 14 rungs

climbing rope section

climbing net section

horizontal bar section

window section

ladder covering 3 areas, 9 rungs with hooks

#### **Set of mats for gymnastics wall,**

6 sections, 4 mats, total area 10 m<sup>2</sup>

122 202 99



#### **Vaulting horse, 3 sections,**

**leather-upholstered**

**W 70 H 40 D 50**

122 004 00

#### **Vaulting horse, middle section**

**height 10 cm**

122 005 00



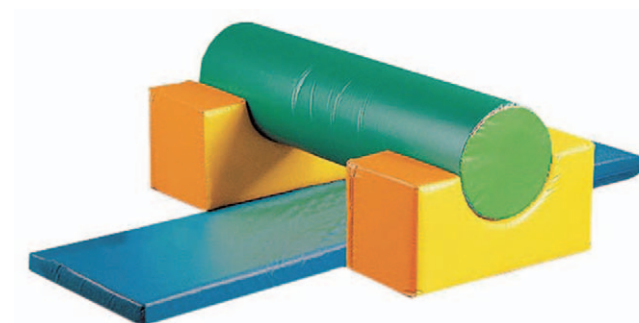
#### **Bench width 32 cm**

122 000 00 200 cm

122 001 00 280 cm

122 002 00 300 cm

122 003 00 400 cm



#### **Element-set „Maxi“ 4-piece**

122 400 99

consists of: 1 roll green/light green, 2 bridges yellow/orange, 1 mat blue

The complete modul is made of foam with colored cases of light tarpaulin.

dimensions of the individual elements:

roll: **W 120 H 30**

bridge: **W 60 H 30 D 30**

mat: **L 180 W 60 H 6**

**Children play and gymnastic equipment „Erzgebirge“**  
**W 255 H 185 D 150** (employed without slides, ladders, ...)  
 122 401 99



A versatile and space-saving climbing apparatus.

consists of:

2 climbing towers	2 coupling elements	1 ladder
1 ladder long	1 balance beam	1 slide green
2 bar rails	2 benches 200 cm	1 slide natur
1 puppet theater accessories	1 ball wall	

With a few simple steps, the climbing frame is as puppet theater or ball wall applications.



**Stool stairs**

The stool stairs offer a variety of uses:  
 climbing stairs, train balance and crawl tunnel.

The items can be used as a stool or landings.

The stool stair is extended about 500 cm long, can be very space-saving into each other.

The colored inserts vary. The treads have a non-slip pad.

dimensions of each stool:

1 stool: <b>W 65 H 70 D 55</b>	2 stools: <b>W 45 H 59 D 48</b>
2 stools: <b>W 45 H 48 D 41</b>	2 stools: <b>W 45 H 37 D 34</b>
2 stools: <b>W 45 H 24 D 27</b>	2 stools: <b>W 45 H 15 D 20</b>

**Stool stairs nature**

122 402 99

**Stool stairs colored**

122 403 99

The colors may vary.





### Vario mini jump box set (incl. swing axle)

**nature**

122 404 99

consists of:

2 jump boxes	<b>W 100 H 70 D 50</b>
2 stays	<b>L 150</b>
1 Ladder	<b>L 150 W 43</b>

### Trapeze mount small, with solid top

**nature**

**W 60 H 45 D 62**

122 407 99

The surface is coated with a non-slip pad.

### Slipping and climbing board small

**nature**

**L 140 W 30 H 8**

122 408 99

### Half ladder small

**nature**

**L 140 W 30 H 8**

122 409 99



### Jump boxes combination 8-piece

consists of:

2 jump boxes 5-piece	<b>W 50 H 81 D 40</b>
1 slipping and climbing board	<b>L 240 W 35</b> (slip surface 30 cm wide)
1 half ladder	<b>L 240 W 35</b>
1 turn ladder	<b>L 240 W 35</b>
1 board with wooden stripes	<b>L 240 W 35</b>
1 horizontal bar	<b>L 165 Ø 3.5</b>
1 balance beam	<b>L 240 W 7</b>

**nature**

122 405 99

**partially blue (illustrated)**

122 406 99

(The items are also available separately.)

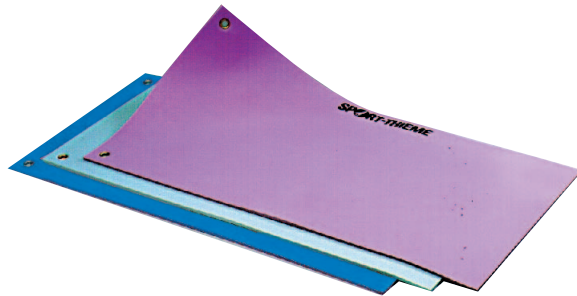




### Sports mats

**L 200 W 100 H 6**

- 122 111 99 without corner strengthening
- 122 112 99 with stuck-on corners
- 122 113 99 with leather corners
- 122 114 99 with leather corners and carrying grips (not illust.)



### Soft mats, vinyl foam material, 2 hooks

**L 120 W 60 H 0.9**

- 122 117 40 -
- 122 117 41 red
- 122 117 42 blue



### Soft mats without leather corners

**L 200 W 150 H 25**

122 115 99

**L 300 W 200 H 25**

122 116 99

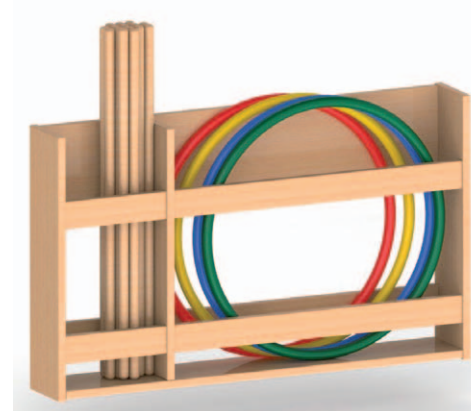


### Wall shelf

**W 102 H 33 D 30**

122 309 00

122 309 00 m



### Wall shelf

**W 102 H 60 D 15**

122 308 00

122 308 00 m



**Gymnastics cupboard**  
**with 6 drawers, 1 adjustable shelf**  
**W 100 H 180 D 60**  
 122 311 00 material veneered  
 122 311 00 m material beech laminated

**Gymnastic set, small**  
**(can be put in gymnastics cupboard or trolley)**  
 122 302 99

Contents :  
 5 gymnastics hoops Ø 70 cm  
 5 gymnastics hoops Ø 60 cm  
 10 gymnastics clubs 36 cm  
 10 gymnastics poles  
 5 corrugated batons  
 10 tennis rings  
 10 PVC gymnastic balls Ø 15 cm  
 ( 2 blue, 2 red, 2 green, 2 yellow, 2 white )  
 10 gymnastic ropes 260 cm  
 2 swinging ropes 800 cm  
 1 rope 1000 cm  
 1 magic rope 800 cm  
 10 rubber balls  
 3 medicine balls



**Gymnastics trolley**  
**(without sports equipment)**  
**W 95 H 92 D 67**  
 122 301 00

**Gymnastic set, medium**  
**(can be put in gymnastics cupboard or trolley)**  
 122 312 99

Contents :  
 6 gymnastics hoops Ø 70 cm  
 6 gymnastics hoops Ø 60 cm  
 12 gymnastics clubs 36 cm  
 12 gymnastics poles  
 4 corrugated batons  
 12 tennis rings  
 15 PVC gymnastic balls Ø 15 cm  
 ( 3 blue, 3 red, 3 green, 3 yellow, 3 white )  
 12 gymnastic ropes 260 cm  
 2 swinging ropes 800 cm  
 1 rope 1000 cm  
 1 magic rope 800 cm  
 12 rubber balls  
 3 medicine balls

**Gymnastic set, large**  
**(can be put in gymnastics cupboard or trolley)**  
 122 313 99

Contents :  
 8 gymnastics hoops Ø 70 cm  
 8 gymnastics hoops Ø 60 cm  
 16 gymnastics clubs 36 cm  
 16 gymnastics poles  
 6 corrugated batons  
 16 tennis rings  
 20 PVC gymnastic balls Ø 15 cm  
 ( 4 blue, 4 red, 4 green, 4 yellow, 4 white )  
 16 gymnastic ropes 260 cm  
 3 swinging ropes 800 cm  
 1 rope 1000 cm  
 1 magic rope 800 cm  
 16 rubber balls  
 4 medicine balls





**Multi-purpose cupboard  
without drawers and shelves**

**W 100 H 180 D 60**

122 310 00 material veneered  
122 310 00 m material beech laminated



**Drawer for gymnastic cupboard  
with roller guides**

**W 88.5 H 8 D 55**

190 161 00 m material beech laminated

**Shelves for gymnastic cupboard  
(not illustrated)**

**W 96 H 1.9 D 55**

190 153 00 material veneered  
190 153 00 m material beech laminated

**Rhythm cart, open cart with 3 levels in which  
the following instruments can be stored  
clearly laid out**

**W 55 H 65 D 27**

122 320 99

**Contents :**

1 pair of rumbas ( 6.8 cm)  
1 block of wood with wooden stick  
1 wooden pipe drum with stick  
1 guiro with scraper  
1 double guiro with scraper  
1 single rod with little bells  
1 double rod with little bells  
1 Turkish crescent with 6 bells (tree-shaped)  
1 leather Turkish crescent with 5 bells (wreath-shaped)  
1 leather Turkish crescent with 10 bells (wreath-shaped)  
1 bell rod (5 bells)  
1 tambourine (Ø 21 cm) with natural skin, incl. sticks  
1 tambourine (Ø 21 cm, 6 little bells) with natural skin  
1 x 10 artificial sound building blocks with 10 sticks  
1 metallophone, 12 + 3 sound sticks  
1 pair of brass cymbals (Ø 15 cm)  
1 brass cymbal (Ø 20 cm)  
1 pair of steel finger cymbals  
1 brass cymbal (Ø 6.7 cm) with handle and sticks  
1 triangle (15 cm) with stick  
1 triangle (20 cm) with stick  
1 pair of sound sticks (20 cm)  
1 pair of synthetically-made castanets  
1 metal stand for cymbals



**Percussion box**

**W 47 H 7.5 D 26**

122 323 99

**Contents**

1 pair of brass finger cymbals  
1 Turkish crescent (tree-shaped)  
2 wooden castanets  
3 wooden block drums with stick  
1 Turkish crescent with 10 little bells (wreath-shaped)  
2 bell rods  
2 guiros with scrapers  
2 triangle (10 cm) with stick  
3 pair of sound sticks (20 x 2 cm)  
1 pair of brass cymbals (Ø 15 cm)



## Play platforms



Design option with different play platforms to better perception various materials!



### Square-shaped

**L 60 W 60**

123 411 .. height 30 cm

123 412 .. height 15 cm

123 414 .. height 23 cm

### wedge-shaped

**L 60 W 60**

123 423 .. height 1 - 30 cm

123 424 .. height 1 - 15 cm

123 425 .. height 15 - 30 cm



### Trolley for play platforms (trapez) height 30 cm

**W 116 H 26 D 51**

123 402 00

### Trolley for play platforms (square) height 30 cm

**W 56 H 26 D 57**

123 413 00



### Play platform with rods and tunnel

**W 60 H 43 D 60**

123 471 00

### Play platform square with mirror

**L 60 W 60**

123 451 99 height 30 cm

123 452 99 height 15 cm

123 453 99 height 23 cm

### Play platform square to

put mats into

**L 60 W 60**

123 461 00 height 30 cm

123 462 00 height 15 cm

123 463 00 height 23 cm

### Play platform rectangular to put mats into

**L 60 W 40**

123 441 00 height 30 cm

123 442 00 height 15 cm

123 443 00 height 23 cm

### Cork mat **L 60 W 40**

123 464 00 height 1.3 cm

### Cork mat **L 60 W 60**

123 465 00 height 1.3 cm

### Soft mat **L 60 W 40**

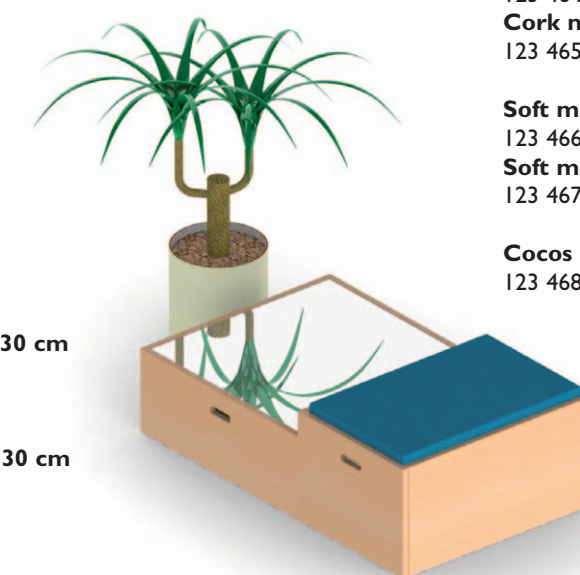
123 466 00 height 4 cm

### Soft mat **L 60 W 60**

123 467 00 height 4 cm

### Cocos mat **L 60 W 40**

123 468 00 height 2.4 cm





Please choose the colour of carpet.  
The entire palette of Tretford carpet please see on page 103  
or visit our website.



**Tretford play carpet,  
width 2 m**

Item no.	Colour
123 201 ..	
... .. 51	red
... .. 52	blue
... .. 53	grey
... .. 54	green
... .. 55	beige
... .. 56	violet
... .. 57	middle blue

A very durable and high quality carpet plaited with real hair –  
80 % goat and 20 % pure new wool and backed with jute  
(fire resistance DIN 4102, building material class B1).  
The corners do not fray so an adging is not necessary.

**Play platform landscape – sharpen your senses!**

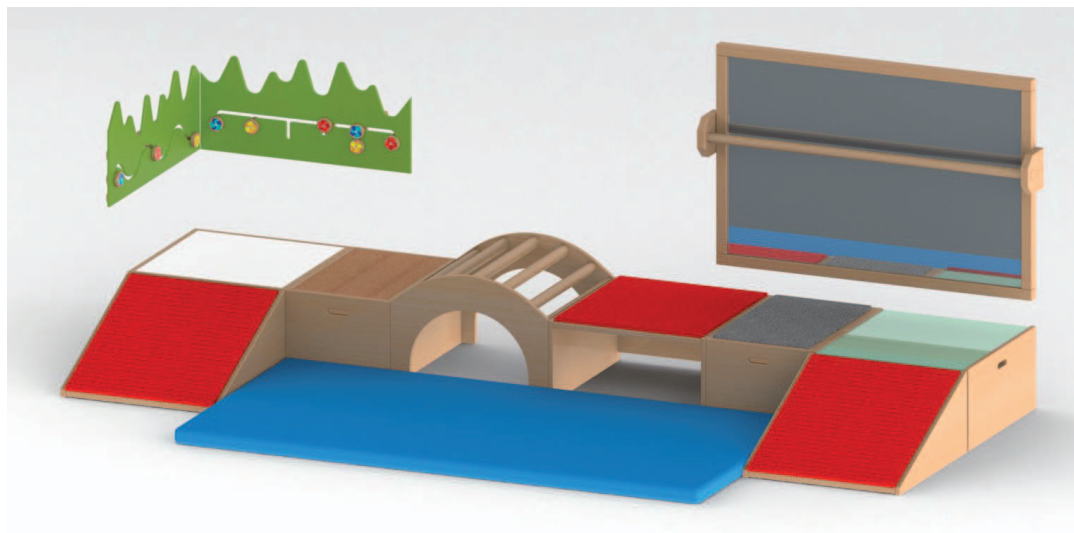
Here's a challenging course compiled.

Different coverings such as carpet, mirrors, cork, etc., children should feel underfoot.

The largest challenge is to cross the bow shoots. This can also be used as a curve.

Wall game elements arouse curiosity and drive the children to overcome the obstacle course.

We recommend an sports mat as fall protection.



**Trapez-shaped  
L 120/60 W 60**

123 401 ..	height 30 cm
123 403 ..	height 15 cm
123 404 ..	height 23 cm





**Drawing trolley on 4 rollers**  
**W 70 H 75 D 40**  
 123 501 00 m material beech laminated



**Cork notice board with beech frame**  
 123 102 99 W 100 H 75  
 123 103 99 W 150 H 75  
 123 104 99 W 200 H 75



**Aluminium clip rail**  
**4 picture clips per metre**  
**max. length 3 m**  
 123 141 99



**Chalkboard, magnetic**  
**with chalk can be written on**  
**W 150 H 100**  
 123 101 99

**Sponge and chalk holder**  
 123 111 99

**Board sponge**  
 123 121 99

**White chalk, 72 pieces**  
 123 131 99

**Colour chalk, 6 colours, 2 of every one**  
 123 132 99



**Picture dry- and puzzle trolley with 4 rollers,**  
**14 extensible shelves (thickness 5 mm)**  
**W 70 H 80 D 40**  
 123 502 00 m material beech laminated



**Picture dry trolley with 4 rollers,**  
**14 extensible grating included**  
**W 58 H 80 D 40**  
 123 503 00 m material beech laminated

**Easel**  
**the rack is solid wood,**  
**chalk board include**  
**paper roll and chalk ledge**  
**W 60 H 100 D 49**  
 123 507 00

**Magnetic board, paper or**  
**chalkboard – the correctly**  
**painting base everytime.**







**Duplo workbench,**  
2 clamps, 2 bench hooks,  
large storage space in the table top

**W 60 H 67 L 125**

123 001 00 lower frame natural colour  
123 001 09 lower frame colour-stained



**Quattro workbench,**  
4 clamps, 4 bench hooks,  
large storage space in the table top

**W 85 H 67 L 125**

123 002 00 lower frame natural colour  
123 002 09 lower frame colour-stained



**Fröbel build. block cart, 230 parts, 2 large and  
4 small boxes, made from polished untreated beech**  
**W 56 H 33 D 36**  
123 601 99



**Work stool, stackable seat height 45 cm**  
**(We are able to offer more different seat heights.**  
**Inquire please!)**  
123 003 00



**Advertising column on 5 rollers,**  
**height 150 cm, Ø 56 cm**  
123 105 ..

**Special pins for advertising column,**  
**60 pieces (not illustrated)**  
123 133 99

## Rest areas invite to relaxe!



**Mattress cupboard  
with division for 9 mattresses**  
**W 102 H 160 D 60**

I2I 303 00  
I2I 303 00 m



**Combination set:  
mattress/linen cupboard,  
divisions for 5 mattresses,  
left 4 adjustable shelves,  
right 1 non-adjustable shelf**  
**W 102 H 160 D 60**

I2I 304 00  
I2I 304 00 m

**Screen incl. curtain**  
I90 095 ..



**Bed linen cupboard,  
4 adjustable shelves,  
1 non-adjustable shelf**  
**W 102 H 160 D 60**

I2I 301 00  
I2I 301 00 m



**Combination mattress/linen cupboard,  
division for 8 mattresses,  
8 compartments for bed linen,  
(without screen and curtain)**

**base cupboard**  
**W 104 H 220 D 60**

I2I 315 00  
I2I 315 00m

**unit cupboard**  
**W 102 H 220 D 60**

I2I 316 00  
I2I 316 00m

**division for 4 mattresses,  
4 compartments,**

**unit cupboard**  
**W 52 H 220 D 60**

I2I 317 00  
I2I 317 00m



**Synthetic leather / Denim  
mattress with zip**  
**L 140 W 54 H 8**  
I2I 402 99

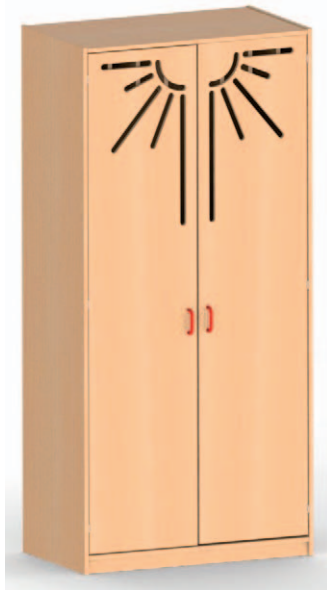
**Denim mattress with zip**  
**L 140 W 54 H 8**  
I2I 401 99

The mattresses are made foam material and are CFC-free.  
The zip on length side makes easier taking off the mattress.  
Please don't wash the denim covering in a washing machine.

**beech veneered – item no. green**

**beech laminated – item no. brown**





**Bed linen cupboard, page 78**

**2 doors with „Sun“**

**W 102 H 160 D 60**

121 321 00

121 321 00 m

**Combination mattress / linen  
cupboard, division for  
8 mattresses, 8 compartments,  
page 78, 2 doors with „Sun“  
base cupboard**

**W 104 H 220 D 60**

121 325 00

121 325 00 m

**unit cupboard, page 78**

**W 102 H 220 D 60**

121 326 00

121 326 00 m

**division for 4 mattresses,  
4 compartments, page 78,  
1 door with „Sun“**

**unit cupboard**

**W 52 H 220 D 60**

121 327 00

121 327 00 m



Also used as a wall-sofa!



**Sun-mat 4-piece**

dimensions:

unfolded

**W 200 H 8 D 200**

items (4 pieces)

**W 100 H 8 D 100**

121 509 99

A relax island for reading, cuddling and playing.

Mat-elements don't get out of place because of velcro bands.

The sun motive is imprinted.

**Rest room & Comfy corner**





#### Stackable bed incl. mattress

**W 146 H 20 D 66**

121 001 00 without rollers

121 011 00 with rollers

You find separately  
mattress on  
page 82.



#### Pillow cover

	W	L
121 111 ..	40	40
121 131 ..	60	40

#### Quilt cover

	W	L
121 211 ..	100	135
121 231 ..	100	150

The current materials, please visit  
our website.



**White Biber fitted bed  
sheet coloured on request.**  
121 051 99

#### Pillow

	W	L
121 101 99	40	40
121 121 99	40	60

#### Flat cushion

	W	L
121 102 99	40	40
121 122 99	40	60

#### Quilt

	W	L
121 201 99	100	135
121 221 99	100	150



The cover is made of 65 % polyester and 35 % cotton,  
the filling of 100 % polyester.  
They are oven-proof, washable 95°C, tumblerfest and thus for  
Allergy and Asthmatics suitable.



### Multi-Elements for primary pupil

As an individual living environment, as practical seating, and of course to play – the „Multi“-Elements can be in ways you’ve never used.

*Materials on request*

dimensions of the individual elements:

#### cuboid

**W 70 H 42 D 70**  
121 501 99

#### chair

**W 50 H 80 D 70**  
seat height appr. 42 cm, seat depth appr. 40 cm  
121 502 99

#### quadrant

**W 70 H 42 D 70**  
121 503 99

#### sofa

**W 100 H 80 D 70**  
seat height appr. 42 cm, seat depth appr. 40 cm  
121 504 99



### Snugglin’ cushion + Back cushion for snugglin’

You can be created by connecting the snugglin’ cushions an individual snuggling paradise. Filled with foam sticks.

*Materials on request*

**Snugglin’ cushion** **Back cushion for snugglin’**  
**L 65 W 65** **L 65 W 35**  
121 507 99 121 508 99

„Cloud“ folding cushion and „Cloud“ additional element have inside a stable foam core, outside a cover made of mixed fabrics, removable (with zipper) and washable at 30°C (do not spin or tumble dry).

dimensions:

folded appr. **W 200 H 30 D 60**  
unfolded appr. **W 200 H 15 D 120**

„Cloud“ folding cushion  
121 505 99



„Cloud“ additional element  
121 506 99





**Playpen with base**  
The inside base is fitting for  
2 mattresses 140 x 60 cm.  
**W 146 H 70 D 126**  
126 006 00

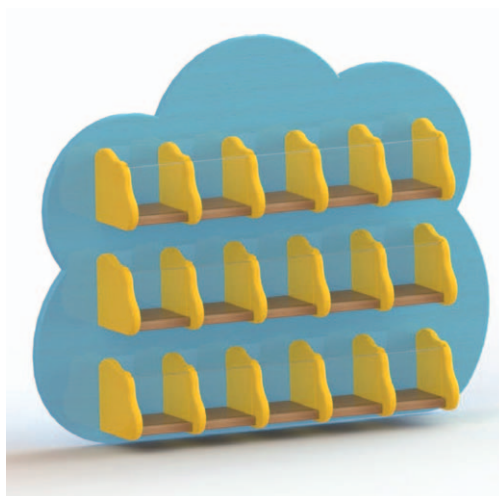


separated mattress,  
CFC-free foam material  
**W 140 H 8 D 60**  
121 403 99

**High chair „Daniel“ on rollers,**  
seat height 62 cm in stand or  
22 cm in lowe, table 44 x 38 cm  
**W 48 H 70 D 40**  
126 009 00



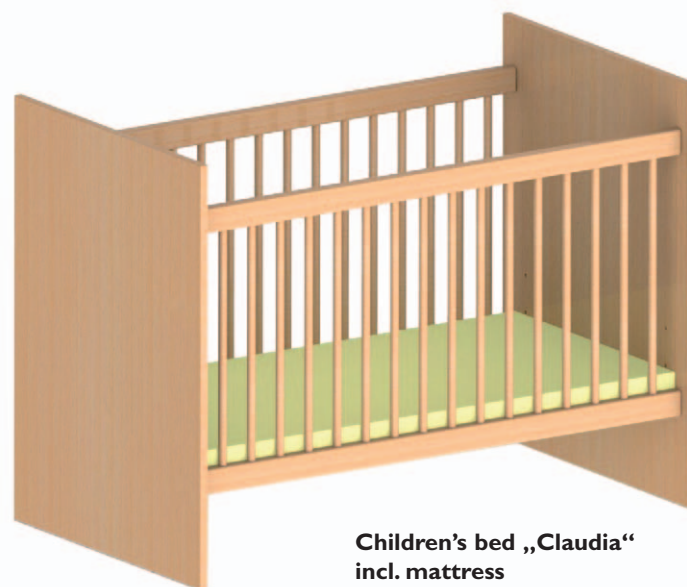
**Cloud with storage compartments**  
**W 66 H 53 D 13**  
123 567 ..



**Children's bed „Julia“**  
incl. mattress (without moon)  
**W 144 H 91 D 70**  
126 007 00



With a flick of the wrist the cot can be trans-  
formed in to a normal children's bed.



**Children's bed „Claudia“**  
incl. mattress  
front and base beech laminated  
**W 124 H 91 D 70**  
126 008 00 m



# Baby changing stations by BEKA – stable and practically!



**Cupboards for winding and  
cloakrooms  
open and with doors**

4 compartments  
**W 66 H 114 D 70**  
126 094 00 m open compartments  
126 093 00 m with doors

6 compartments  
**W 98 H 114 D 70**  
126 061 00 m open compartments  
126 060 00 m with doors

8 compartments  
**W 110 H 114 D 70**  
126 042 00 m open compartments  
126 041 00 m with doors

**Coloured doors  
and changing pads  
on request!**



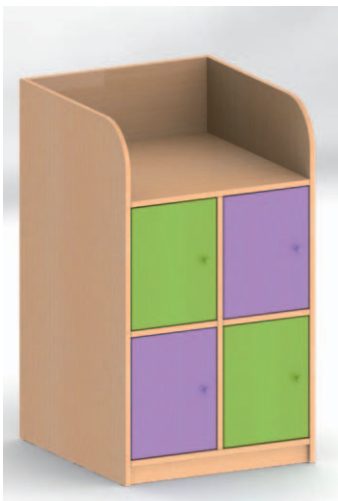
**Upper part**  
**W 102 H 26 D 70**  
126 003 00 m beech laminated

**Baby's changing table padding  
with artificial leather cover**  
**W 98 H 4 D 68**  
126 001 00 white  
126 001 02 blue

**Barrier between wall and cupboard for baby's  
changing table padding (piece) (not illustrated)**  
**W 30 H 80 D 2**  
126 004 00 m beech laminated



**Bench for 4 pots  
(without decoration)**  
**W 115 H 26 D 30**  
126 100 00 m



### Changing combination

for installation in a niche the tiled walls around form the boundary. The round built-in washbasin has a diameter of 52 cm. (Supplied without fitting.)

In 12 funny stained material boxes you find space for clothe.

Changing pad with leatherette upholstery white.

**W 138 H 90 D 70**

126 901 99 w



### Baby changing station with stairs – easy to assemble

Almost inconspicuous, cabinet body white, light blue boxes with acrylic front, changing pad with leatherette upholstery light blue and stairs cupboard with door, arrangement as required.

**W 124 H 110 D 70**

126 902 99 w



### Hygienically knows the exterior –

the funny colourful fronts of drawers and stairs cupboard with visible back panel, arrangement as required, staircase is both left and right possible, changing pad with leatherette upholstery white.

**W 106 H 110 D 70**

126 897 99 w



The baby changing with raised edges meets the latest provisions for equipping of toddler groups!

### Times here – times there!

Mobile combination with retractable staircase, simply slide stair in the cupboard and go to another place.

In 8 material plastic boxes you have space for clothes. Changing pad with white leatherette upholstery with solid foam core

**W 72 H 105 D 92**

126 896 00 m



### Baby changing combination

for installation in a left-hand corner, cupboard with 16 colorful boxes made of plastic material, with work top and changing pad with light blue leatherette upholstery, right salaried staircase with door

**W 178 H 110 D 90**

126 903 00 m



### Baby changing combination

for installation in a left-hand corner; left stainless steel built-in basin, 12 drawers with self-closing, effective depth 55 cm, right salaried staircase with door, incl. changing pad with white leatherette upholstery

**W 184 H 110 D 90**

126 904 00 m



### Changing table combination

for installation in a right-hand corner; left side with height 110 cm, cupboard with 8 drawers with self-closing, 55 cm deep, right 2 stable cupboards with built-in shower tray 80 x 80 cm, between retractable staircase with width 40 cm, changing pad with leatherette upholstery light blue

**W 195 H 110 D 90**

126 905 00 m



### Changing table combination

2 children can be wound simultaneously, between cupboards with 20 drawers with self-closing are a stairs and a built-in acrylic bathtub white 80 x 50 cm, including 2 pieces of changing pads with leatherette upholstery light blue

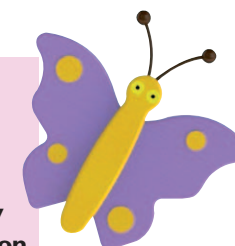
**W 289 H 110 D 70**

126 906 00 m



**Our service  
for you!**

We plan your baby  
changing combination  
according your  
wishes!





# With BEKA learning by playing



## Adjustable stilts

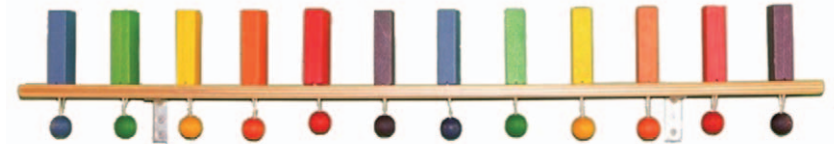
300 001 00 L 127  
300 000 00 L 150



**Wooden building blocks**  
400 pieces in a bag  
123 610 00



**Wall element 6 bricks**  
W 36 H 9 D 6  
123 611 00



**Wall element 12 bricks**  
W 72 H 9 D 6  
123 612 00

## Wall elements

The wall dominos offer many advantages.  
Attached to the wall, they can empty walls seem alive and colorful.  
Even long and narrow corridors to be coveted playing surface.

The domino with 6 stones is suitable for small children. You don't need so much patience and skills to put up the stones and the falling down is also easier to observe.

If the children are older, is also a suitable element with 12 stones.  
Because there is much more fun, when the domino is longer.

**Doll's pram with set**  
(without decoration)  
300 004 00



**Buggy**  
(without decoration)  
300 003 00



**Scooter, large**  
H 54 L 80  
300 002 00



**Skateboard**  
W 51 H 8 L 51  
300 009 00

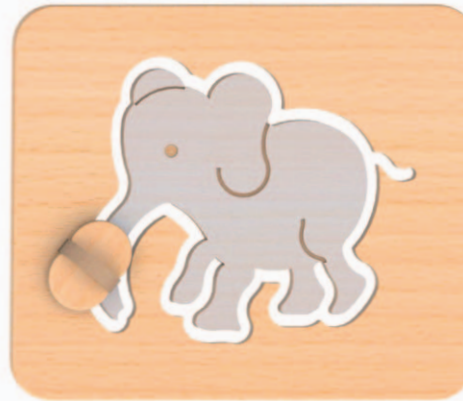


# A world for children's hands and feet!



## Motoric games

Our new wall games for children to learn and improve motor skills and co-ordination very suitable. Exploring the various elements is fun and movements can always be practiced.



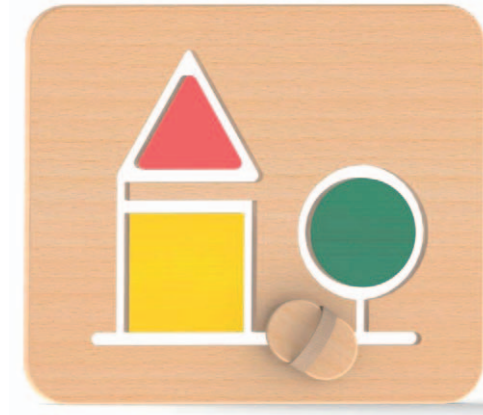
Wall toy „Elephant“  
W 58 H 49 D 6.6  
123 613 00



Wall toy „Snail“  
W 58 H 49 D 6.6  
123 614 00



Wall toy „Butterfly“  
W 58 H 49 D 6.6  
123 615 00



Wall toy „Geometry“  
W 58 H 49 D 6.6  
123 616 00





**Doll's house nature (without inventory)**  
**W 57 H 54 D 33**  
 119 209 00



**furniture for doll's house „Filius“**  
**for 4 rooms, 16-piece**  
 150 210 00







**Furniture for doll's house „Rustikal“  
for 4 rooms, 23-piece  
150 212 00**



**1 Doll's house „Solitaire“  
(without inventory)  
W 55 H 61 D 61  
119 210 00**

**2 Winter garden  
119 211 00**



## Toys for pushing and pulling

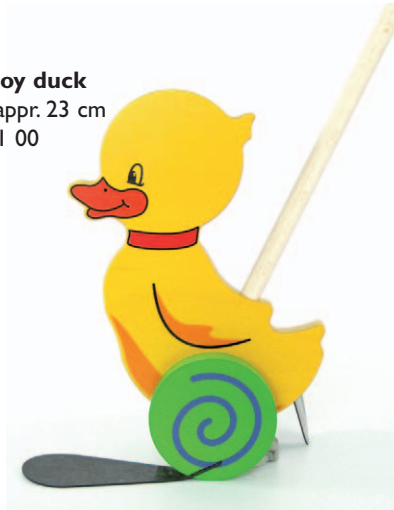


**Stacking tower bear „Timi“**  
W 9 H 10.5 D 9  
150 305 00



**Cube puzzle farm**  
W 9 H 4.5 D 9  
150 307 00

**Push-toy duck**  
height appr. 23 cm  
150 311 00



**Pull-toy caterpillar**  
length appr. 32.5 cm  
150 312 00



## Jumping Jacks, height appr. 18 cm

**Jumping „Lucie“**  
150 309 00



**Jumping „Frog“**  
150 308 00







## Unit on rollers with central locking



Staff room table, veneered  
height 74 cm

	W	T
116 901 00	160	80
116 902 00	140	70
116 908 00	120	60



3 drawers with compartments  
and hanging frame

W 44 H 70 D 57  
116 907 00



4 drawers,  
without compartments

W 44 H 70 D 57  
116 905 00

4 drawers,  
with compartments

W 44 H 70 D 57  
116 906 00

## Upholstered swivel-chair



light grey, grey base  
116 921 99

brown, black base  
116 922 99

dark grey, black base  
116 923 99

bordeaux, black base  
116 924 99

blue, black base  
116 927 99

Arm rests for upholstered  
swivel-chair, colour: black  
116 926 99



... for a long day at the office  
Upholstered swivel-chair „Classico“

back of chair extra high and  
ergonomical  
lumar vertebra joist insert

blue, black base  
116 928 99

bordeaux, black base  
116 929 99

dark grey, black base  
116 930 99

Arm rests for upholstered  
swivel-chair, colour: black  
116 925 99



Wall shelf  
W 82 H 72 D 25  
116 690 00



**Complete system „Susanne II“  
with staffroom table  
W 312 H 215 D 40/140  
116 500 ..**



**Complete system „Susanne“  
incl. desk with a drawer  
W 312 H 215 D 40/140  
116 501 ..**

**This complete system for all staff member offers a functional design in a limited space.  
A workplace was created that even with limited space can offer an effective work situation  
through a variable worktop that can be shortened or lengthened by 30 cm.**

**Hand grips and posts are available in different stains, see page 103.**

## Filing cabinet with base, width 52 cm



4 adjustable shelves,  
1 non-adjustable shelf  
**W 52 H 180 D 40**  
116 601 00 door left  
116 601 00 m door left  
116 602 00 door right  
116 602 00 m door right

**W 52 H 180 D 60**  
(not illustrated)  
116 605 00 door left  
116 605 00 m door left  
116 606 00 door right  
116 606 00 m door right



5 drawers,  
2 adjustable shelves  
**W 52 H 180 D 40**  
116 603 00  
116 603 00 m



4 adjustable shelves  
**W 52 H 180 D 40**  
116 677 00 door left  
116 677 00 m door left  
116 678 00 door right  
116 678 00 m door right

**W 52 H 180 D 60**  
(not illustrated)  
116 609 00 door left  
116 609 00 m door left  
116 610 00 door right  
116 610 00 m door right



Property cupboard  
with 5 lockers  
**W 52 H 180 D 40**  
116 674 00 door left  
116 674 00 m door left  
116 675 00 door right  
116 675 00 m door right

**W 52 H 180 D 60**  
(not illustrated)  
116 607 00 door left  
116 607 00 m door left  
116 608 00 door right  
116 608 00 m door right



Wardrobe,  
1 shelf, 1 clothes' rail  
**W 52 H 180 D 60**  
116 682 00 door left  
116 682 00 m door left  
116 683 00 door right  
116 683 00 m door right





open 2 adjustable shelves,  
partition, 2 doors, each  
section 1 adjustable shelf  
**W 102 H 180 D 40**

116 621 00

116 621 00 m



partition, 2 doors, each  
section 1 adjustable shelf,  
middle open, down partition,  
1 door, 1 adjustable shelf,  
5 drawers  
**W 102 H 180 D 40**

116 625 00 door left

116 625 00 m door left

116 626 00 door right

116 626 00 m door right



partitions, 4 doors,  
each section 1 adjustable shelf,  
middle open  
**W 102 H 180 D 40**

116 627 00

116 627 00 m



beech veneered – item no. green

beech laminated – item no. brown

- ① Staff room table  
**W 140 D 70**  
with conference corner, circular Ø 100 cm  
total dimension L 190 D 70/100 H 74  
116 502 00

Staff room table  
**W 160 D 80**  
with conference corner, circular Ø 110 cm  
total dimension L 215 D 80/110 H 74  
116 503 00

- ② Built-under cupboard  
with locker  
**W 44 H 70 D 40**  
116 510 00

- ③ Coat stand  
height appr. 180 cm  
116 950 00



Please contact us,  
we create your own concept!



## Filing cabinet with base, width 100 cm or 102 cm, height 180 cm



Filing cabinet / wardrobe, partition,  
2 doors, 4 adjustable shelves on left,  
1 non-adjustable shelf and  
extendable clothes' rail on right

**W 100 H 180 D 40**

116 680 00

116 680 00 m



Filing cabinet / wardrobe, partition,  
2 doors, 2 adjustable shelves on left,  
2 non-adjustable shelves, property  
cupboard with lock and extendable  
clothes' rail on right

**W 100 H 180 D 40**

116 611 00

116 611 00 m



Filing cabinet / material cupboard  
partition, 2 doors, each section  
4 adjustable shelves

**W 102 H 180 D 40**

116 673 00

116 673 00 m



Filing cabinet / material cupboard  
2 doors, 4 adjustable shelves

**W 100 H 180 D 40**

116 679 00

116 679 00 m

A knob or HEWI-handle can be added on  
request to the cupboard doors with cylinder  
locks.

Extra charge for knob 190 301 00

Extra charge for HEWI-handle 190 300 ..



Parts for building between  
cupboards

lattice shelf for shoes 116 801 00

clothes' rail 116 802 99

shelf 116 803 00







**Wardrobe,**  
2 doors, 1 shelf, 1 clothes' rail  
W 100 H 180 D 60  
116 681 00  
116 681 00 m



**Combination of property cupboard and wardrobe, partition, 5 lockers on left, door right, 1 shelf, 1 clothes' rail**  
W 102 H 180 D 60  
116 685 00 lockers left, door right  
116 685 00 m lockers left, door right  
116 686 00 lockers right, door left  
116 686 00 m lockers right, door left



**beech veneered – item no. green**  
**beech laminated – item no. brown**

**Oval conference table for 8 persons**  
W 180 H 76 D 80  
112 635 ..





**Upholstered chair, stackable,  
seat height 45 cm**  
116 917 00

*Fabrics on request*



**Upholstered armchair (not stackable)  
seat height 44 cm**  
116 916 00

*Fabrics on request*



**Clothes' rail with 9 double hooks per metre  
(max. length 200 cm)**  
117 461 ..



**Sanitary cupboard with first aid kit,  
according to DIN 13157-C**  
W 35 H 45 D 15  
116 947 99



**Medicine cupboard with  
a child safety**  
W 40 H 30 D 16  
116 948 00

**Sanitary cupboard without first aid kit (not illust.)**  
W 35 H 45 D 15  
116 946 99



**Upholstered lounger, clickable**  
L 200 W 80 H 35  
116 940 99

**Stand-desk  
write area appr. 52 x 31 cm**  
W 52 H 110 D 40  
116 695 00



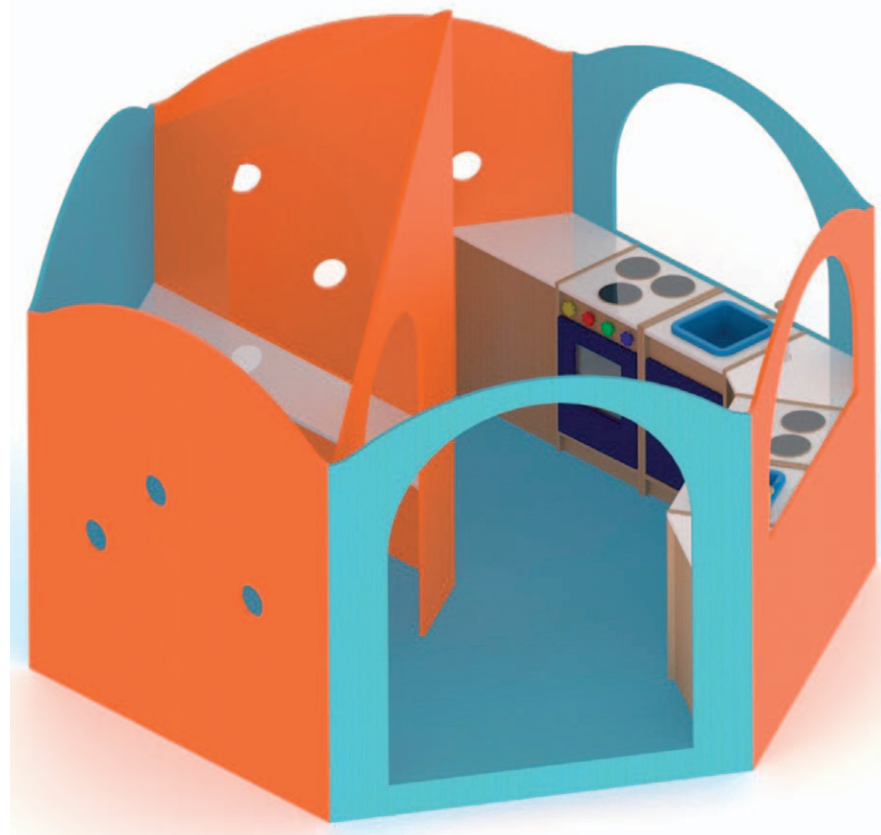
**Waste paper basket  
consists in recyclable plastic**  
volume 18 l  
Ø 30,5 H 32,5  
116 945 00



**Small Playhouse**  
included wall elements  
**W 90 H 130 D 90**  
123 850 ..

**Kitchen playhouse**  
**W 250 H 200 D 217**  
123 814 ..

Kitchen playhouse included corner parts.  
Please choose 4 pieces of children's furniture, width 36 cm (on page 56).



## Compact playing solution for small and tall children



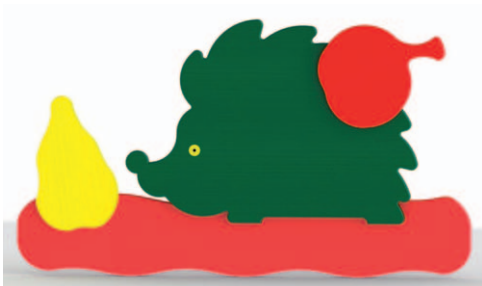
**Small playhouse**  
with acrylic mirror on inside  
**W 112 H 70 D 56**  
123 260 ..



**Kitchen playcorner**  
**W 105 H 135 D 105**  
123 815 ..

Kitchen playcorner included washing machine, dish washer and double cupboard on rollers.

## Wall elements



**Hedgehog**  
W 60 H 39  
190 801 00



**Sheep**  
W 54 H 70  
123 564 ..



**Butterfly**  
W 58 H 40  
123 542 ..

**Please contact us, we create your children's paradise!**



**Tortoise**  
W 60 H 35  
190 802 ..



**Duck family**  
W 60 H 31  
190 803 ..

**Cloud**  
W 27 H 15  
123 547 09

**Sun**  
W 38 H 38  
123 546 05

**Cow**  
W 40 H 85  
123 569 ..



**Meadow – wave**  
W 80 H 37  
123 550 00

**Meadow – pair**  
W 160 H 37  
123 548 00

**Meadow – line**  
W 80 H 37  
123 549 00

**Ladybird**  
W 20 H 15  
123 543 ..

**Tree**  
W 94 H 150  
123 520 00





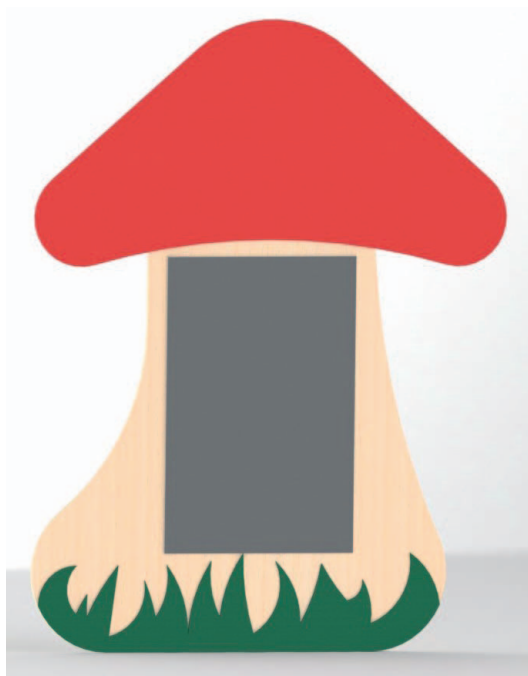
For the smallest children

Slide hedgehog  
W 180 H 126 D 83  
123 810 ..

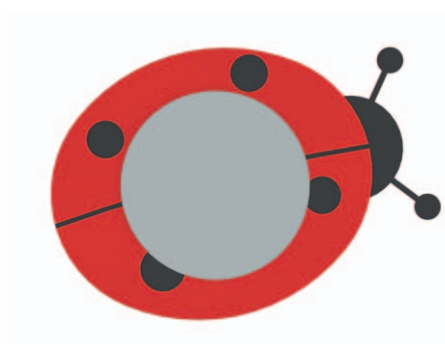


Design your floor interesting and varied. Game elements, mirrors or interestingly designed information panels give your device a completely certain character. Educationally valuable elements combined with natur-motifs are eye-catchers for every visitor in your facility.

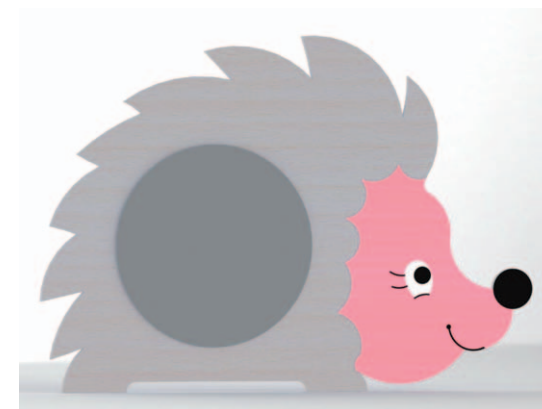
## Elements with mirror



Mushroom  
with laminated safety mirror  
W 125 H 162  
123 561 ..



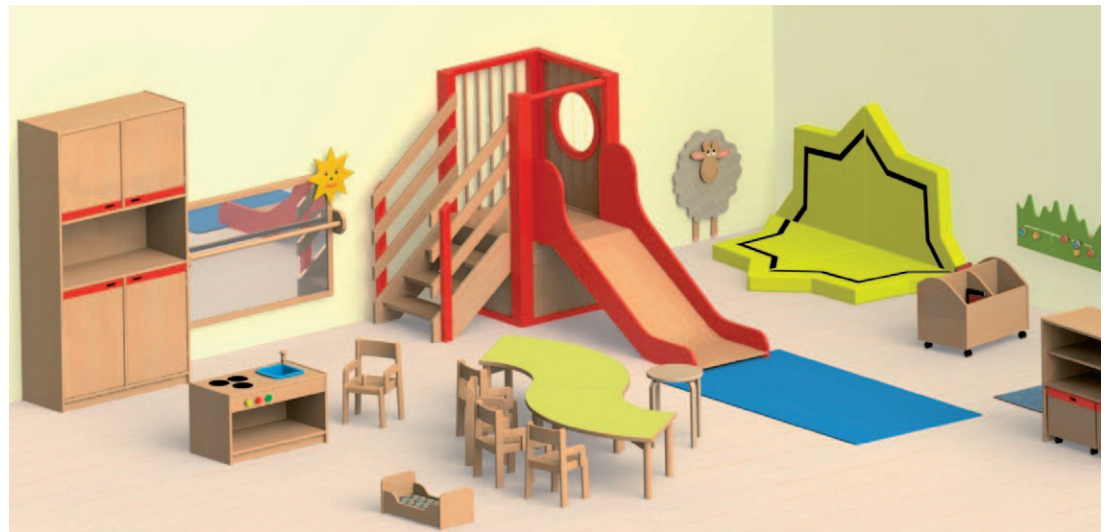
Ladybird with acrylic mirror  
W 50 H 36  
123 563 ..



Hedgehog  
with laminated safety mirror  
W 100 H 70  
123 565 ..

## BEKA – Your partner

- > *Planning creative interior design concepts*
- > *Production in our factory in the Ore Mountains*



The children facilities **TODAY** are companies that need to present themselves. Educational goals and the furnishing to be well matched. Therefore, we gladly to offer you individually solutions that support your concept.

**Please call us!**  
**You may also like to send an email!**



Be inspired by our new furniture and room concepts, which we make individually for you. Take the opportunity of a reliable and professional service.

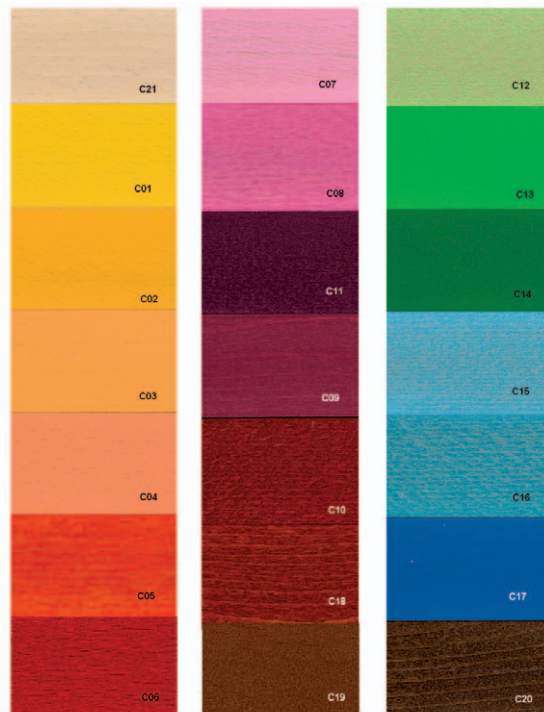
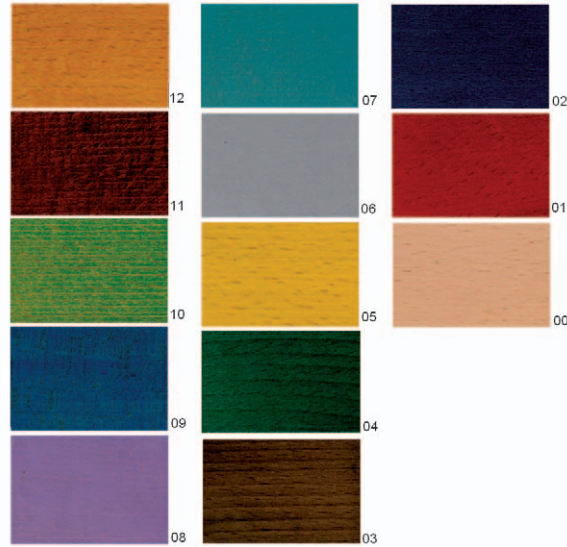




## Fabrics and stains

You can choose the colour of these stains for posts, hand grips, boxes and drawers.  
Please enter the appropriate number in your order.

### Stains



### Fabric collection



### Tretford



The complete Tretford carpet collection  
please find on our website.



## Business, delivery and payment terms and conditions

- Supplies and services shall be performed by us exclusively according to the following terms and conditions, unless expressly agreed otherwise in writing with the contracting party concerned. The awarding of a contract to us includes the acceptance of the following terms and conditions by the buyer. These business, delivery and payment terms and conditions shall thereupon apply for the whole period of the business relationship in the version currently valid at the time of placement of an order.
- Any purchase terms and conditions of the buyer deviating from the aforesaid terms and conditions shall apply only if we have consented to this in writing.
- Our offers shall be without obligation. The buyer shall be bound to the order placed by him for a period of 4 weeks. The contract shall be considered as having been entered into only upon the confirmation of the acceptance of the order by us and in regard of the content of the same, or through the execution of delivery or provision of services. We will be entitled to include third parties in the performance of the contract.
- Illustrations and information concerning the subject matter of the contract contained in catalogues, technical literature and other documents which apply at the time of contract conclusion shall be regarded only as being approximately and not as assured properties. We reserve the right to design and form changes to the subject matter of contract during the delivery period unless the subject matter of contract and its appearance would thereby be altered to an extent intolerable for the buyer. All data on quantities, colours, dimensions and weights shall be understood as being subject to the tolerances customary in the trade. The contents of catalogues shall generally be considered as offers.
- Any representations, subsidiary agreements and modifications to the contract shall be effective only if made in writing. This written form shall be mandatory.
- Our prices shall be understood as being expressed in EUR exclusive of packing and shipping costs, plus the legal value-added tax. Where prices are given in catalogues, technical literature and the like, the bold prices are final prices including value-added tax. Prices printed in lightface and italic figures are net prices excluding value-added tax. These prices given in connection with catalogue offers shall be without obligation. The binding prices shall be those agreed upon for a given order in connection with our written order confirmation.
- The prices agreed at the date of entering into of a contract reflect the cost factors applying at that time. Should there be a change in these cost factors (in particular labour, energy, freight, charges etc.) during the period between the date of contract conclusion and the agreed delivery time in cases where the delivery period is more than 8 weeks, we shall be entitled to adjust prices accordingly. If the buyer is not in business, or if the contract is not part of the operation of his business, this provision shall apply only if the period between the date of contract conclusion and the agreed delivery date is more than 4 months.
- Payments shall be due without any deduction within 30 days of invoicing. If payments are effected within 10 days, 2 % discount will be granted by us.
- Bills of exchange and cheques shall be considered as payment only on being honoured. Payments by bill of exchange shall require prior agreement in writing. Exchange and discounting costs shall be charged to the buyer's account. The contractor shall not be liable for the timely presentation, protestation, notification and returning of a bill of exchange in the event of dishonouring of the same unless he or his subcontractor can be blamed of intent or gross negligence.
- No offsetting with counterclaims which are contested by us and which have not obtained legal force shall be allowed. Any withholding of payments by the buyer on account of counterclaims arising from other contractual relationships shall be excluded.
- If the buyer defaults in payment or if unsatisfactory information is provided to us about his abilities to pay or about his capital assets, we shall be entitled to discontinue further performance of current contracts up to the time of full payment in advance or until appropriate securities have been provided. Where such advance payments are not made or securities provided within a reasonable period, we shall be entitled to terminate the contract and charge the cost which have arisen till then, inclusive of lost profit, to the buyers account.
- Where partial payments have been agreed, the entire balance shall become immediately due as soon as the buyer has defaulted completely or partly in paying 2 instalments.
- In case of delayed payment or respite, we shall without first having to send a reminder or serve formal notice of default, be entitled, without prejudice to our right to claim damages for a larger actual damage caused by the delay, to charges interest, the rate of which is 4 % above the discount rate of the Bundesbank valid at that time.
- Up to the time of complete payment of all our claims arising from the business relationship, all goods supplied by us shall remain our property. If the buyer is in violation of contract, in particular if he defaults in payment, we shall be entitled to take back the goods, and the buyer shall be obliged to surrender the same.
- The buyer shall be entitled to sell supplied goods within the framework of the normal movement of goods. He shall not be entitled, however, to pledge them or to transfer them as a guarantee. The buyer shall be obliged to immediately notify us of any pledging or another infringement of our rights by a third party. If the buyer sells the goods supplied by us, he thereby assigns to us already at that time up to the time of complete settlement of all our claims arising from our supplies of goods the claims, inclusive of all accessory rights, he is entitled to with respect to his buyers. When requested by us, the buyer shall be obliged to notify third party buyers of the assignment and to provide us with the information, and hand over to us the associated documents, needed by us to assert our claims.

- The reservation of ownership and pledging of the supplied goods by the seller shall not be considered as a withdrawal from the contract unless the stipulations of the consumer credit act apply.
- Insofar as the value of the reservations of ownership and extended reservations of ownership (subsequent assignments) to which we are entitled exceeds the value of claims we have with respect to the buyer by more than 20 % of the value of goods and claims, we already undertake today on proof and request of the buyer or of a third party affected by the over-securing to release the corresponding securities at our option.
- The seller will ship the goods for the buyer with the required care at the latter's risk, but shall be liable only for any loss or damage caused intentionally or by gross negligence. The goods can be insured at the buyer's expense. However, insurance cover shall be provided only if this has been expressly requested by the buyer. Delivery dates shall be valid only if they have been expressly confirmed by the seller. The agreed delivery time begins at the date of signing of the contract, not earlier, however, than at the date at which all documents to be provided by the buyer have been completely submitted as well as not before the date at which any possibly agreed down payment or cash in advance has been received.
- If the seller defaults in delivery, he shall first be granted a reasonable extension of time. If he still fails to deliver by the time the extension of time expires, the buyer shall be entitled to withdraw from the contract. To the extent permitted by law, the provisions of § 361 of the civil code shall not apply or shall be substituted by the present agreement. No claims for damages due to default higher than the value of the contract concerned (own contribution exclusive of purchases of goods and services and material) shall be accepted.
- Plant interruptions both in the seller's plant and those of his suppliers, in particular interruptions due to strike, lock-out, war, riot as well as any other cases of force majeure, shall not entitle the parties to terminate the contract. The principles concerning the frustration of contract shall remain unaffected.
- In the event of a bilateral mercantile transaction, the seller shall have the right to withhold the drawings, plans, raw material and any other items possibly supplied by the buyer in accordance with § 369 of the commercial code up to the time of complete settlement of all claims arising from the business relationship.
- In the event of a delay in deliveries and performance of services attributable to the seller, the buyer may grant a reasonable extension of time in writing, pointing out that he will reject the acceptance of the subject matter of contract after the expiry of the final deadline. If the seller has still failed to perform at the time of expiry of the final deadline, the buyer shall be entitled to terminate the contract by giving notice in writing or to raise a claim for damages for non-performance, which claim shall be limited to the loss foreseeable at the time of contract conclusion, not higher, however, than 10 % of the value of that portion of the contract which has been fulfilled, unless the non-performance is due to the seller's intent or gross negligence.
- In the event of delayed supplied or services, the buyer shall be entitled to claim damages for default not exceeding 5 % of the value of those portions of the overall supply or service which, due to the delay, cannot be used in time or not in conformity with the contract. Unless the seller can be blamed of intent or gross negligence, any and all further claims of the buyer, including claims for damages for lost profit and consequential damage, shall be excluded.
- The above provisions shall apply accordingly in any case of inability to supply or perform, the cause of which is not attributable to us.
- We shall principally supply ex works Dorfchemnitz. If necessary, experienced forwarding agents and assembly companies will be entrusted by us with delivering our products and commodities. In regards of the deployment of subcontractors and vicarious agents, just as in the case of the deployment of third party contractors, we shall be liable only for negligence in selection.
- The price risk and risk of accidental damage or loss shall pass to the buyer at the latest at the time of shipment of the subject matter of contract even in cases where we have undertaken to execute delivery and erection.
- According to our currently applicable freight graduation, the conditions or costs for delivery charged by us are as follows:  
Orders to an unloading point above EUR 2500,- net in value (without VAT) will be consigned free of charge to address of buyer. For orders below EUR 2500,- net in value, the following proportionate freight costs will be charged:

up to EUR 2500,-	6 % of value of goods
up to EUR 2000,-	7 % of value of goods
up to EUR 1500,-	8 % of value of goods
up to EUR 750,-	9 % of value of goods
up to EUR 250,-	15 % of value of goods
- For reasons of transport security and saving of transport costs, our furniture and furnishings are partly shipped in a disassembled or partly assembled form. Any assembly work beyond this is not part of our scope of supply and has also not been allowed for in the price. On request, we offer to perform this work at a fixed price prior to placement of an order. If the seller is ordered to perform such assembly work, the buyer undertakes to create the conditions for a speedy execution of the work to be performed and to make sure already prior to the delivery of the furnishings ordered that the room dimensions will suffice for the work to be performed and to determine the location of utility lines such as gas, water, heating and power lines. If drilling and chasing works are required within the framework of the assembly of the furnishings, the assembly personnel shall be informed prior to the start of the works

on the location of the possibly covered utility lines. If we are not provided with information prior to the start of the drilling and chasing works, we cannot be held liable for any damage resulting from such works.

- Where goods are supplied for which the seller has been entrusted with such performing the assembly, the assembly will principally be performed at the day of delivery. Should an assembly not be possible because the rooms have not yet been completed by the construction company concerned, e.g. in the case of reconstructed or newly erected buildings, additional costs will be resulting from the times required for travelling to the respective location.
- If the buyer does not accept the subject matter of contract at the agreed date, we shall be entitled to grant a reasonable extension of time, to use it for any other purposes at his discretion after the expiry of the same and to effect delivery to the buyer after a reasonable additional respite without prejudice to our rights to withdraw from the contract under § 326 of the civil code or to claim damages for default. If we claim damages for default, we shall be entitled to claim damages in the amount of 20 % of the agreed price plus the remuneration for any services already performed and material used without having to substantiate the claim, unless we can be shown to have suffered a much lower damage. We reserve the right to claim damages for a higher actual damage incurred. Where products have been made to special specifications, the buyer shall be obliged in any case to accept the products concerned. By products made to special specifications we understand all parts not contained in a catalogue.
- Our warranty covers only newly made products and services and only defects which render the supplied goods or provided services unusable or severely affect their fitness for the intended purpose due to circumstances occurring prior to the passing of risk, in particular due to faulty design, material or workmanship, and shall expire in accordance with the applicable law 2 years after the date of delivery or provision of service. The legal statutes of limitation for warranty claims shall apply accordingly to any claims the buyer may have due to the violation of accessory obligations, positive breach of contract and illegal actions, unless the seller can be shown to have acted intentionally or grossly negligent.
- The seller shall not be liable for any damage due to improper use, incorrect treatment, non-observance of the erection conditions specified by us, natural wear, failure to carry out maintenance and due to the erection in rooms in which the furnishings are exposed to the effects of excessive moisture and weather, or due to chemical, electrochemical effects etc., unless the causes of the damage are attributable to the seller.
- The seller shall be notified of any apparent immediately upon the delivery of a consignment or provision of a service and hidden defects immediately after having been detected. If the buyer is not in business, he shall only be obliged to immediately notify apparent defects. In case notification is not made in time, the consignment or service shall be considered as having been approved.
- If any rectification work is performed improperly by the buyer or a third party or if they tamper otherwise without the seller's prior approval with the subject matter of contract in connection with a warranty claim raised, the warranty shall become null and void.
- We undertake to make good free of charge, by repair or at our option by the supply of a replacement of the defective parts, defects which appear in the goods supplied or services performed, which also includes the failure to achieve the properties guaranteed. Any parts replaced shall become our property. The buyer shall grant the required time and opportunity for performing the repairs or replacing the parts found to be defective. A maximum of three repairs shall be allowed. We shall be entitled to make the repair or replacement dependent on a partial payment made by the buyer with due consideration of the defect concerned.
- If a repair or replacement turns out to be impossible, has finally failed or is delayed in an unreasonable manner, the buyer shall be entitled to demand a reduction in price or cancellation of the contract. Any and all further claims the buyer may have against us and our subcontractors, including claims (contractual and non-contractual) for direct and indirect damage (e.g. lost profit, non-materialised savings, damage due to claims third party raise against the buyer) and claims arising from the performance of repairs, shall be excluded, unless we can be shown to have acted with gross negligence or intentionally or will be imperatively liable because the subject matter of contract fails to exhibit the properties guaranteed.
- Where the goods supplied by us are to be exported, the buyer shall observe the relevant export regulations and the import regulations applying in the countries for which the goods are destined.
- Dorfchemnitz or, as the case may be, the seat of the competent district court of the district in which Dorfchemnitz is situated shall be the place or performance and jurisdiction for all claims and legal disputes arising from the contract relationship, including summary bill enforcement proceedings and proceedings restricted to documentary evidence if the buyer is a registered trader in the sense of the commercial code or if the contracting parties can agree otherwise on an effective stipulation as to a venue.
- In regard of any export orders executed by us, exclusively the German law, the civil and contract law shall apply unless found to be in conflict with the international convention for the sale of goods. Only in the event of such conflict or if agreed upon otherwise in writing, the rules for the international sale of goods shall additionally apply.
- If one or several provisions of these business, delivery and payment conditions turn out to be ineffective, the remaining provisions of these terms and conditions shall remain in full force and effect.

Imprint: 01/2013

Accessories .....	35, 100, 101	Dowel holder .....	64	Serving trolley .....	65
Adjustable stilts .....	86	Drawer for gymnastics cupboard .....	73	Shelf combination components .....	2
Advertising column .....	77	Drawing trolley .....	76	Shelf combinations .....	3 to 9
Aluminum clip rail .....	76	Easel .....	76	Shelves .....	2, 40, 65, 73
Baby changing cupboard .....	83	Element set „Maxi“ .....	68	Shoulder bag cupboards .....	24
Baby changing station .....	84, 85	Felt protective strip .....	25	Sink unit .....	64
Baby's changing table padding .....	83	Felt sliders .....	28, 30	Skateboard .....	86
Bench for baby's .....	83	Fence for room partition .....	42	Slide .....	101
Benches .....	36, 37, 39	Filing cabinet/ material cupboard .....	94 to 97	Small cupboards with base .....	12 to 18
Birthday candle stands .....	91	Filing cabinet/ wardrobe .....	94 to 97	Small cupboards without base .....	21, 22, 23
Booking trolley .....	13	Free-climbing wall .....	67	Soft mats .....	71
Boot trolley and cupboard .....	40	Fridge with freezer .....	65	Spacing board .....	37
Box on rollers .....	25	Furniture for doll's houses .....	88, 89	Special pins .....	77
Buggy .....	86	Gymnastics cupboard .....	72	Special preparation .....	31
Built under cupboard .....	95	Gymnastics elements .....	66 to 70	Sports mats, soft mats .....	71
Chairs .....	28, 98	Gymnastics set .....	72	Stackable bed .....	80
Chalk .....	76	Gymnastics trolley .....	72	Stacking chair and high chair .....	28, 82
Chalkboard .....	76	Hanging basket for multi-purpose cupboard .....	65	Stacking tower .....	90
Children's furniture .....	56 to 58	Identity pictures .....	34	Staff room table .....	92, 95
Children's two seater .....	54	Individual paper roll .....	45	Stand desk .....	98
Children's bed .....	82	Jumping Jacks .....	90	Standard part for room partition .....	42
Children's corner bench .....	59	Lower kitchen cupboard .....	60 to 64	Stool stairs .....	69
Children's cradle .....	58	Materials .....	103	Storage box cupboard .....	16 to 23, 26, 27
Children's kitchen insert .....	55	Mattress and bed linen cupboards .....	78, 79	Storage boxes .....	24, 25
Children's kitchen unit .....	55, 57	Mattresses .....	78	Sun mats .....	67, 79
Children's sofa and armchair .....	59	Medicine cupboard .....	98	Tables .....	30 to 33
Children's table .....	57, 59	Mirror elements .....	101	Threading games .....	91
Cloakroom bench .....	36	Motivic games .....	87, 91, 100	Toys for pulling and push .....	90
Cloakroom inner corner .....	37	Multi elements .....	54, 81	Triple hooks .....	34
Cloakroom outer corner .....	37	Multi-purpose cupboard .....	65, 73	Trolley for bags .....	38
Cloakroom support .....	36	Occupation table .....	33	Trolley for cloakroom .....	40
Cloakroom shelf .....	36, 41	Oval conference table .....	97	Turn benches .....	68
Cloakroom with open compartments ....	41, 94, 96, 97	Paper cupboard .....	17	Unit on rollers .....	92
Clothes rail .....	98	Parts for building between cupboard .....	96	Upholstered chair .....	98
Cloud .....	82	Percussion box .....	73	Upholstered lounge .....	98
Coat stand .....	95	Picture try trolley .....	76	Upholstered swivel-chair .....	92
Color stains .....	103	Pillow .....	80	Upper cupboards .....	12, 15, 19
Combination stool and bench .....	57	Plastic drawers .....	26, 27	Upper part .....	83
Comfy elements .....	79, 81	Play carpet .....	48, 75, 103	Vaulting horse .....	68
Complete system „Susanne“ .....	93	Play castle .....	48 to 53	Ventilation hood .....	64
Conference corner .....	95	Play platforms .....	74, 75	Wall attachment .....	42
Cooker cupboard .....	64	Play table .....	33	Wall cupboard for children's kitchen .....	60, 62, 63
Cork notice board .....	76	Playhouses .....	99	Wall dominos .....	86
Corner shelf partition .....	42	Playpen .....	82	Wall mirror .....	38
Corner shelves .....	13	Property and storage boxes .....	24	Wall shelf for children's furniture .....	56
Cover for pillow and quilt .....	80	Property cupboard (for group) .....	18	Wall shelf for children's kitchen .....	60, 62, 63
Crockery cupboard .....	65	Property cupboard (staff room) .....	94, 97	Wall shelf .....	71, 92
Cube puzzle .....	90	Puzzle trolley .....	76	Wardrobe (figures) .....	39
Cupboard as room partition .....	18, 20	Quilt .....	80	Wardrobe .....	83
Cupboards with base .....	12 to 22	Rhythm cart .....	73	Washroom rail .....	38
Cupboards with an open base .....	21 to 23	Roof for room partition .....	42	Waste paper basket .....	98
Cylinder lock .....	10	Room partitions .....	42 to 47	Wooden blocks .....	77, 86
Doll's houses .....	88, 89	Safety guard for pots .....	64	Work stool .....	77
Doll's pram .....	86	Sanitary cupboard .....	98	Workbench .....	77
Double hooks .....	34	Scooter .....	86	Worktop .....	64
Double rubbish bin .....	64	Screen incl. curtain .....	78		



**BEKA Möbel GmbH**  
Hauptstraße 143 a  
09619 Dorfchemnitz  
Tel.: +49 (0) 3 73 20 - 86 20  
Fax: +49 (0) 3 73 20 - 86 22 2  
[info@beka-moebel.de](mailto:info@beka-moebel.de)  
[www.beka-moebel.de](http://www.beka-moebel.de)

Visit us on the internet:



Catalogue presented by:

